

BETTER
illumination.
HIGHER
colour fidelity.
MORE
magnification.
NO
DOUBTS.





HEINE Otoscopes



BETA400 F.O. BETA200 F.O. K 180 F.O. mini3000 F.O. BETA 100 K 100 mini3000

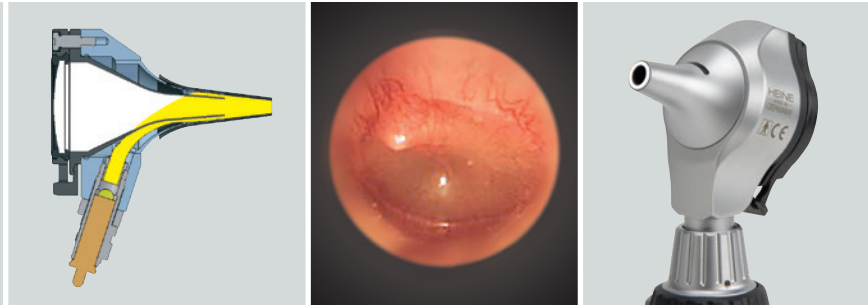
	Housing construction						
Metal	<input type="checkbox"/>	<input type="checkbox"/>			<input type="checkbox"/>		
Polycarbonate			<input type="checkbox"/>	<input type="checkbox"/>		<input type="checkbox"/>	<input type="checkbox"/>
	Viewing window						
Glass	<input type="checkbox"/>	<input type="checkbox"/>			<input type="checkbox"/>		
Acrylic			<input type="checkbox"/>	<input type="checkbox"/>		<input type="checkbox"/>	<input type="checkbox"/>
3x magnification		<input type="checkbox"/>	<input type="checkbox"/>	<input type="checkbox"/>	<input type="checkbox"/>	<input type="checkbox"/>	<input type="checkbox"/>
4.2x magnification	<input type="checkbox"/>						
	Illumination						
LED F.O. illumination	<input type="checkbox"/>	<input type="checkbox"/>		<input type="checkbox"/>			
XHL F.O. illumination	<input type="checkbox"/>	<input type="checkbox"/>	<input type="checkbox"/>	<input type="checkbox"/>			
XHL Direct illumination					<input type="checkbox"/>	<input type="checkbox"/>	<input type="checkbox"/>
	Instrument size						
Professional	<input type="checkbox"/>	<input type="checkbox"/>	<input type="checkbox"/>		<input type="checkbox"/>	<input type="checkbox"/>	
Compact				<input type="checkbox"/>			<input type="checkbox"/>
	Available power sources						
Battery 2.5V	<input type="checkbox"/>	<input type="checkbox"/>	<input type="checkbox"/>	<input type="checkbox"/>	<input type="checkbox"/>	<input type="checkbox"/>	<input type="checkbox"/>
Rechargeable battery 2.5V				<input type="checkbox"/>			<input type="checkbox"/>
Rechargeable battery 3.5V	<input type="checkbox"/>	<input type="checkbox"/>	<input type="checkbox"/>		<input type="checkbox"/>	<input type="checkbox"/>	
	Tips						
Reusable tips	<input type="checkbox"/>	<input type="checkbox"/>	<input type="checkbox"/>	<input type="checkbox"/>			<input type="checkbox"/>
Reusable specula					<input type="checkbox"/>	<input type="checkbox"/>	
AllSpec disposable tips	<input type="checkbox"/>	<input type="checkbox"/>	<input type="checkbox"/>	<input type="checkbox"/>	<input type="checkbox"/>	<input type="checkbox"/>	<input type="checkbox"/>
UniSpec disposable specula					<input type="checkbox"/>	<input type="checkbox"/>	
Tip adaptor					<input type="checkbox"/>	<input type="checkbox"/>	
	Insufflation bulb						
Insufflation port	<input type="checkbox"/>	<input type="checkbox"/>	<input type="checkbox"/>	<input type="checkbox"/>	<input type="checkbox"/>	<input type="checkbox"/>	
Page	019 / 020	022	024	025 / 027	0030	032	033

* with Tip adaptor

** Optional insufflation port connector available



High-quality Fiber Optics (F.O.) provide a homogeneous, reflex-free illumination.



HEINE BETA® 400 LED F.O. Otoscope

4.2x magnification with LED^{HQ} illumination

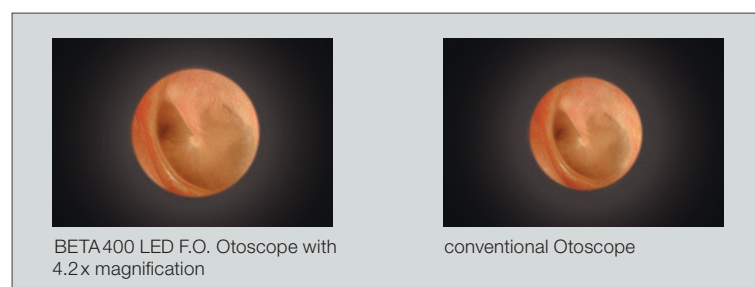


- EXCLUSIVELY AT HEINE**
- 4,2x Magnification
 - LED in HQ – Stepless dimmable
 - All-metal housing

The otoscope has been designed with an all metal housing and scratch resistant glass lenses which guarantee a lifetime of maintenance-free use. LED with virtually unlimited hours of working life. No need to ever replace bulbs. Maintenance-free for a lifetime.

- **Exclusive 4.2x magnification.** More detail of anatomical structures and easy recognition of foreign bodies.
- **Exceptional depth of field.** Provides sharp spatial images in a convenient working range.
- **Large field of view.** Gives the necessary overview and perfect orientation during examinations.
- **Multi-coated precision optics.** Offer high resolution and distortion free images.
- **Fiber Optic Illumination.** Ensures homogeneous, very bright illumination and an unobstructed view of the ear canal and tympanum.
- HEINE has set a new standard which maintains that only the best is good enough, from the selection of materials to processing, from light intensity to dimmability, and from thermal management to a colour rendering index as high as possible.
That's what we call LED in HEINE Quality – or LED^{HQ}.
- **Special optical interface to precisely integrate the LED illumination with the optical system** to ensure bright, homogeneous light during examinations.
- **Patented, unique, stepless dimming** from 3% to 100% with practical one-finger operation.
- **One hand operation.** The unique patented design allows the permanently attached optical system to be flipped open and out of the way, enabling instrumentation and ease of cleaning.
- **Integrated insufflation port** offers tympanic mobility testing without air leakage.
- **Full functionality of the BETA 400 LED is guaranteed with BETA Rechargeable Handles and the EN 100/EN 200 Wall Transformers.**

BETA 400 LED F.O. Otoscope	LED
with 4 reusable tips, without handle	B-008.11.401
same, without tips, without handle	B-008.11.400



BETA 400 LED F.O. Otoscope with 4.2x magnification

conventional Otoscope



HEINE BETA® 400 F.O. Otoscope

4.2x magnification with XHL illumination



BETA 400 F.O. Otoscope with XHL Xenon Halogen illumination instead of LED illumination. Other technical specifications the same as the BETA 400 LED F.O. Otoscope.

∴ **XHL Xenon Halogen bulb** with bright illumination and authentic colour rendering.

BETA 400 F.O. Otoscope	2.5V XHL	3.5V XHL
with 4 reusable tips, without handle	B-001.11.401	B-002.11.401
same, without tips, without handle	B-001.11.400	B-002.11.400
XHL Xenon Halogen spare bulb	X-001.88.077	X-002.88.078

HEINE ENT Diagnostic Sets

 with XHL or LED^{HO} illumination



Set complete with: **BETA 400 F.O. Otoscope in XHL or LED**

1 set (4 pcs.) of reusable tips (B-000.11.111)
5 of both AllSpec disposable tips 2.5 and 4 mm Ø
spare bulb for XHL version
hard case

ENT Diagnostic Sets	2.5V XHL	3.5V XHL	LED
BETA battery handle	B-143.10.118		
BETA 4 USB rechargeable handle with USB cord and plug-in power supply		B-143.27.388	B-143.28.388
BETA 4 USB rechargeable handle		B-143.27.387	B-143.28.387
BETA 4 NT rechargeable handle with NT 4 table charger		B-143.23.420	B-143.24.420

HEINE Diagnostic Sets

with XHL or LED^{HO} illumination



Set complete with: **BETA400 F.O. Otoscope, BETA200 Ophthalmoscope both in XHL or LED,**
 1 set (4 pcs.) of reusable tips (B-000.11.111)
 5 of both AllSpec disposable tips 2.5 and 4 mm Ø
 one spare bulb each for XHL version
 hard case

Diagnostic Sets	2.5V XHL	3.5V XHL	LED
BETA battery handle	A-153.10.118		
BETA4 USB rechargeable handle with USB cord and plug-in power supply		A-153.27.388	A-153.28.388

HEINE Diagnostic Kits

with XHL or LED^{HO} illumination



Kit complete with: **BETA400 F.O. Otoscope, BETA200 Ophthalmoscope both in XHL or LED,**
 1 set (4 pcs.) of reusable tips (B-000.11.111)
 5 of both AllSpec disposable tips 2.5 and 4 mm Ø
 one spare bulb each for XHL version
 without hard case

Diagnostic Kits	3.5V XHL	LED
NEW! 2x BETA4 NT rechargeable handle with NT4 table charger	A-153.23.422	A-153.24.422



HEINE BETA® 200 LED F.O. Otoscope

Sharpest images, perfect colour rendering and brightness in LED^{HQ}



The otoscope has been designed with an all metal housing and scratch resistant glass lenses which guarantee a lifetime of maintenance-free use. LED with virtually unlimited hours of working life. No need to ever replace bulbs. Maintenance-free for a lifetime.

- ∴ **3x magnification.** The multi-coated glass viewing window offers high resolution and distortion-free images.
- ∴ **Fiber Optic Illumination.** Ensures homogeneous, very bright illumination and an unobstructed view of the ear canal and tympanum.
- ∴ HEINE has set a new standard which maintains that only the best is good enough, from the selection of materials to processing, from light intensity to dimmability, and from thermal management to a colour rendering index as high as possible.
That's what we call LED in HEINE Quality – or LED^{HQ}.
- ∴ **Special optical interface to precisely integrate the LED illumination with the optical system** to ensure bright, homogeneous light during examinations.
- ∴ **Patented, unique, stepless dimming** from 3% to 100% with practical one-finger operation.
- ∴ **Viewing window is permanently attached**, and swivels for instrument use and complete cleaning of the instrument head.
- ∴ **Integrated insufflation port** offers tympanic mobility testing without air leakage.
- ∴ **Full functionality of the BETA200 LED is guaranteed with BETA Rechargeable Handles and the EN100/EN200 Wall Transformers.**

EXCLUSIVELY AT HEINE

- 3x Magnification
- LED in HQ – Stepless dimmable
- All-metal housing

BETA200 LED F.O. Otoscope	LED
with 4 reusable tips, without handle	B-008.11.501
same, without tips, without handle	B-008.11.500

HEINE BETA® 200 F.O. Otoscope

Sharpest images, perfect colour rendering and brightness in XHL



BETA200 F.O. Otoscope with XHL Xenon Halogen illumination instead of LED illumination. Other technical specifications the same as the BETA200 LED F.O. Otoscope.

- ∴ **XHL Xenon Halogen bulb** with bright illumination and authentic colour rendering.

BETA200 F.O. Otoscope	2.5V XHL	3.5V XHL
with 4 reusable tips, without handle	B-001.11.501	B-002.11.501
same, without tips, without handle	B-001.11.500	B-002.11.500

XHL Xenon Halogen spare bulb	X-001.88.077	X-002.88.078
------------------------------	---------------------	---------------------

HEINE ENT Diagnostic Sets

with XHL or LED^{HO} illumination



Set complete with: **BETA200 F.O. Otoscope in XHL or LED**

- 1 set (4 pcs.) of reusable tips (B-000.11.111)
- 5 of both AllSpec disposable tips 2.5 and 4 mm Ø
- spare bulb for XHL version
- hard case

ENT Diagnostic Sets	2.5V XHL	3.5V XHL	LED
BETA battery handle	B-141.10.118		
BETA 4 USB rechargeable handle with USB cord and plug-in power supply		B-141.27.388	B-141.28.388
BETA 4 USB rechargeable handle		B-141.27.387	B-141.28.387
BETA 4 NT rechargeable handle with NT 4 table charger		B-141.23.420	B-141.24.420

HEINE Diagnostic Sets

with XHL or LED^{HO} illumination



Set complete with: **BETA200 F.O. Otoscope, BETA200 Ophthalmoscope both with XHL or LED,**

- 1 set (4 pcs.) of reusable tips (B-000.11.111)
- 5 of both AllSpec disposable tips 2.5 and 4 mm Ø
- one spare bulb each for XHL version
- hard case

Diagnostic Sets	2.5V XHL	3.5V XHL	LED
BETA battery handle	A-132.10.118		
BETA 4 USB rechargeable handle with USB cord and plug-in power supply		A-132.27.388	A-132.28.388

HEINE Diagnostic Kits

with XHL or LED^{HO} illumination



Kit complete with: **BETA200 F.O. Otoscope, BETA200 Ophthalmoscope both with XHL or LED,**

- 1 set (4 pcs.) of reusable tips (B-000.11.111)
- 5 of both AllSpec disposable tips 2.5 and 4 mm Ø
- one spare bulb each for XHL version
- without hard case

Diagnostic Kit	3.5V XHL	LED
NEW! 2x BETA 4 NT rechargeable handle with NT 4 table charger	A-132.23.422	A-132.24.422



HEINE® K 180 F.O. Otoscope

The standard, all around Fiber Optic Otoscope



- ∴ Fiber Optic (F.O.) illumination
- ∴ Polycarbonate construction

Otoscope with Fiber Optic (F.O.) illumination constructed of light, high-impact polycarbonate.

- ∴ **Fiber Optic Illumination.** Ensures homogeneous, very bright illumination and an unobstructed view of the ear canal and tympanum.
- ∴ **Polycarbonate construction.** Shock-resistant.
- ∴ **XHL Xenon Halogen Technology.** Extremely bright, white light.
- ∴ **Acrylic viewing window with 3x magnification.** Sharply-focused distortion-free image.
- ∴ **Swivelling viewing window built into instrument.** Useful for instrumentation, cannot be mislaid.
- ∴ **Insufflation port.** Reliable test of tympanic mobility.

K180 F.O. Otoscope	2.5V XHL	3.5V XHL
with 4 reusable tips, without handle	B-001.11.551	B-002.11.551
same, without tips, without handle	B-001.11.550	B-002.11.550
XHL Xenon Halogen spare bulb	X-001.88.077	X-002.88.078

HEINE® K 180 F.O. Diagnostic Sets



Set complete with: **K 180 F.O. Otoscope**
 1 set (4 pcs.) of reusable tips (B-000.11.111)
 soft pouch

K180 F.O. Otoscope Sets	2.5V XHL	3.5V XHL
BETA battery handle	B-181.10.118	
BETA4 USB rechargeable handle with USB Cord and plug-in power supply		B-181.27.388
BETA4 USB rechargeable handle		B-181.27.387
BETA4 NT rechargeable handle with NT 4 table charger		B-181.23.420



Set complete with **K180 Ophthalmoscope, K180 F.O. Otoscope**
 1 set (4 pcs.) of reusable tips (B-000.11.111)
 hard case

K180 Combined Diagnostic Sets	2.5V XHL	3.5V XHL
BETA battery handle	A-279.10.118	
BETA4 USB rechargeable handle with USB Cord and plug-in power supply		A-279.27.388
BETA4 USB rechargeable handle		A-279.27.387
BETA4 NT rechargeable handle with NT 4 table charger		A-279.23.420

HEINE mini3000® LED F.O. Otoscope

With LED illumination in HEINE Quality – LED^{HQ}



Modern otoscope with maintenance-free LED illumination. Twice as bright as a conventional Xenon Halogen instrument.



- ⚡ Maintenance-free pocket instrument
- ⚡ Bright LED illumination
- ⚡ Typ. 10 hours operating time

- ⚡ **Maintenance-free**, no need to ever exchange the LED.
- ⚡ LED Thermal management for a **consistent light output throughout the whole working life**.
- ⚡ HEINE has set a new standard which maintains that only the best is good enough, from the selection of materials to processing, from light intensity and thermal management to a colour rendering index as high as possible.
That's what we call LED in HEINE Quality – or LED^{HQ}.
- ⚡ **Twice as bright as** Xenon Halogen instruments.
- ⚡ **Exclusive Battery Performance Indicator:** When the instrument is switched on, the maximum light intensity is shown, then the light intensity is regulated down to the level that corresponds to the current charge status of the battery so you know when your batteries need changing.
- ⚡ **Fade-Out Feature:** brightness reduces slowly even with low residual capacity, for even more efficient use of dry or rechargeable batteries.
- ⚡ **Operating time typ. 10 hours.** The batteries need to be changed less often and the rechargeable batteries last longer.
- ⚡ **For further technical specifications, please see mini3000 F.O. Otoscope with XHL illumination on page 027.**

mini 3000 LED F.O. Otoscope	2.5V LED
with mini3000 battery handle, 1 set (4 pcs.) reusable tips and 5 of both 2.5 and 4 mm dia. AllSpec disposable tips, with batteries	D-008.70.120
with mini3000 battery handle and 5 of both 2.5 and 4 mm dia. AllSpec disposable tips, with batteries	D-008.70.110
with mini3000 rechargeable handle and 5 of both 2.5 and 4 mm dia. AllSpec disposable tips (please order mini NT table charger separately)	D-008.70.301
mini3000 LED F.O. Otoscope head without handle and without accessories	D-008.70.106

Insufflation port connector for mini3000 F.O. Otoscopes	D-000.80.101
---	---------------------



To upgrade to a rechargeable instrument with mini NT table charger, please see page 145.



HEINE mini3000 pocket instruments – a complete range of quality diagnostic instruments for your pocket. Available in black or blue. Please specify the colour you prefer when ordering. If not otherwise specified, we will supply black instruments.

HEINE mini3000® LED F.O. Diagnostic Sets



LED NOW IN HEINE QUALITY.



Set complete with: **mini3000 LED F.O. Otoscope**
 1 set (4 pcs.) reusable tips (B-000.11.111)
 5 each of 2.5 and 4 mm dia. AllSpec disposable tips
 hard case

mini3000 LED F.O. Diagnostic Sets	2.5V LED
with mini3000 battery handle with batteries	D-885.20.021



Set complete with: **mini3000 LED Ophthalmoscope, mini3000 LED F.O. Otoscope,**
 1 set (4 pcs.) reusable tips (B-000.11.111)
 5 each of 2.5 and 4 mm dia. AllSpec disposable tips
 hard case

mini3000 LED F.O. Diagnostic Sets	2.5V LED
with 2 mini3000 battery handles with batteries	D-886.11.021



Set complete with: **mini3000 LED Ophthalmoscope, mini3000 LED F.O. Otoscope,**
 mini NT table charger
 5 each of 2.5 and 4 mm dia. AllSpec disposable tips

mini3000 LED F.O. Diagnostic Sets	2.5V LED
with 2 mini3000 rechargeable handles	D-860.11.022*

*with this Art. No. only available in black

HEINE mini3000® F.O. Otoscope

Compact pocket otoscope with XHL illumination



Modern pocket otoscope

Fiber Optic (F.O.) illumination

Port for pneumatic testing

Modern pocket otoscope with XHL Xenon Halogen bulbs for bright illumination and accurate colour rendering. Unique design, compact and powerful. Can only be used with the mini3000 handle system. Available in black or blue.

- ∴ 20,000 ON/OFF switch cycles guaranteed.
- ∴ **Distal Fiber Optic (F.O.) illumination:** Reflex-free illumination of tympanum and ear canal.
- ∴ **Viewing window with 3x magnification and** optimized casing surface for razor-sharp images and minimal reflection. Swivelling viewing window built into instrument.
- ∴ **Pneumatic testing** of tympanum mobility by using the insufflation port and an optional connector.
- ∴ **Attachment clip with integrated on/off switch.** Switches off automatically when returned to the pocket.
- ∴ **Replaceable batteries.** Size AA, or optional rechargeable battery with mini NT table charger.*
- ∴ **2-piece handle and head.** Easy to maintain, flexible.
- ∴ **Award-winning design.** Maximum quality with minimum dimensions.

mini3000 F.O. Otoscope	2.5V XHL
with mini3000 battery handle, 1 set (4 pcs.) reusable tips and 5 of both 2.5 and 4 mm dia. AllSpec disposable tips, with batteries	D-001.70.120
with mini3000 battery handle and 5 of both 2.5 and 4 mm dia. AllSpec disposable tips, with batteries	D-001.70.110
with mini3000 rechargeable handle and 5 of both 2.5 and 4 mm dia. AllSpec disposable tips (please order mini NT table charger separately)	D-001.70.301
mini3000 F.O. Otoscope head without handle and without accessories	D-001.70.106
XHL Xenon Halogen spare bulb	X-001.88.105
Insufflation port connector for mini3000 F.O. Oscopes	D-000.80.101



*To upgrade to a rechargeable instrument with mini NT table charger, please see page 145.

HEINE mini3000 pocket instruments – a complete range of quality diagnostic instruments for your pocket. Available in black or blue. Please specify the colour you prefer when ordering. If not otherwise specified, we will supply black instruments.



HEINE mini3000® F.O. Diagnostic Sets



Set complete with: **mini3000 F.O. Otoscope**
1 set (4 pcs.) reusable tips (B-000.11.111)
5 each of 2.5 and 4 mm dia. AllSpec disposable tips
hard case

mini3000 F.O. Diagnostic Sets	2.5V XHL
with mini3000 battery handle with batteries	D-851.10.021



Set complete with: **mini3000 Ophthalmoscope, mini3000 F.O. Otoscope,**
1 set (4 pcs.) reusable tips (B-000.11.111)
5 each of 2.5 and 4 mm dia. AllSpec disposable tips
hard case

mini3000 F.O. Diagnostic Sets	2.5V XHL
with 2 mini3000 battery handles with batteries	D-873.11.021

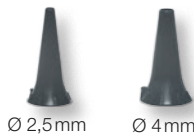


Set complete with: **mini3000 Ophthalmoscope, mini3000 F.O. Otoscope,**
mini NT table charger
5 each of 2.5 and 4 mm dia. AllSpec disposable tips

mini3000 F.O. Diagnostic Sets	2.5V XHL
with 2 mini3000 rechargeable handles	D-859.11.022*

*with this Art. No. only available in black.

HEINE AllSpec® Disposable Tips



[01]



[02]



[03]

- ∴ **For the most secure fit, best light transmission and hygiene,** we recommend the use of **HEINE Otoscope Tips.**
- ∴ **Assured quality.** No sharp edges.

AllSpec Disposable tips (grey)	
for BETA400, BETA200, K180, mini3000 F.O., mini3000 Oscopes	
Pack of 1000 pcs. 2.5 mm dia. (infants) [01]	B-000.11.128
Pack of 1000 pcs. 4 mm dia. (adults) [01]	B-000.11.127
Dispenser pack, single, of 250 tips, 2.5 mm dia (infants) [02]	B-000.11.153
Dispenser pack, single, of 250 tips, 4 mm dia (adults) [02]	B-000.11.152
Case of 10 dispenser packs of 250 tips, 2.5 mm dia (infants)	B-000.11.151
Case of 10 dispenser packs of 250 tips, 4 mm dia (adults)	B-000.11.150

- ∴ **AllSpec Tip dispenser** incl. tips Ø 2.5 mm and 4 mm.
The right size, visible and instantly available. A clean new tip for each and every patient.

AllSpec Tip dispenser (2 x 45 tips) [03]	B-000.11.149
--	---------------------

⊗: Single use only.

Reusable Tips

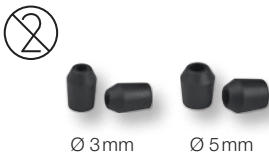


- ∴ For the most secure fit, best light transmission and hygiene, we recommend the use of **HEINE Otoscope Tips**.
- ∴ **Made of high-density SANALON S plastic with smooth external finish.** Easy to clean. Common germicides can be used. Autoclavable at up to 134 °C.
- ∴ **Ergonomic shape.** Painless atraumatic insertion.

Reusable tips (black)	1 piece	50 pieces
for BETA400, BETA200, K180, mini3000 F.O., mini3000 Otoscopes		
Reusable tip 2.4 mm dia.	B-000.11.107	B-000.11.207
Reusable tip 3.0 mm dia.	B-000.11.108	B-000.11.208
Reusable tip 4.0 mm dia.	B-000.11.109	B-000.11.209
Reusable tip 5.0 mm dia.	B-000.11.110	B-000.11.210

1 set = 4 pcs. reusable tips SANALON S 2.4/3/4/5 mm dia. **B-000.11.111**

Soft Disposable Tips



- ∴ Fits over the end of the tip to protect the auditory canal.

Soft disposable tips (black)		
Soft disposable tip 3 mm dia. 40 pcs./1 pack	B-000.11.141	
Soft disposable tip 5 mm dia. 40 pcs./1 pack	B-000.11.142	

⊗: Single use only.

Insufflation Bulb

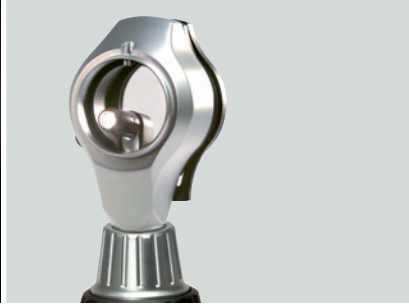
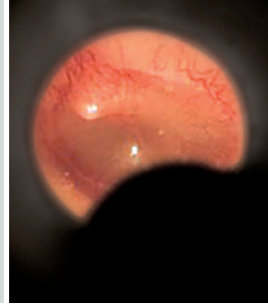
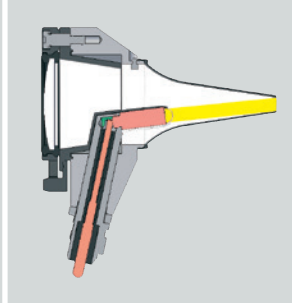


- ∴ For pneumatic testing.

Insufflation bulb for BETA400, BETA200 and K180 Otoscopes	B-000.11.240
Insufflation bulb for mini3000 F.O. Otoscope with connector	D-000.80.102
Insufflation port connector for mini3000 F.O. Otoscope	D-000.80.101



Bright XHL Xenon Halogen direct illumination.



HEINE BETA® 100 Diagnostic Otoscope

Diagnostic Otoscope with an all-metal housing

An otoscope with direct Xenon Halogen illumination in an elegant all-metal instrument head. For use with reusable specula or UniSpec disposable specula. With tip-adaptor (B-000.11.306) it is also possible to use AllSpec disposable tips.



- ∴ **All-metal housing.** Exceptionally tough and durable.
- ∴ **Instrument head matt-black inside.** Eliminates reflexes.
- ∴ **XHL Xenon Halogen Technology.** Extremely bright, white light.
- ∴ **Large, scratch-resistant glass viewing window with 3x magnification.**
Unobstructed view, distortion-free image.
- ∴ **Swivelling viewing window built into instrument.** Useful for instrumentation, cannot be mislaid.
- ∴ **Insufflation port.** Reliable test of tympanic mobility.

- ∴ All-metal housing
- ∴ Silica glass viewing window
- ∴ Easy instrumentation



[01]

BETA100 Diagnostic Otoscope	2.5V XHL	3.5V XHL
with 6 reusable specula, without handle	B-001.11.527	B-002.11.527
without specula, without handle	B-001.11.525	B-002.11.525
XHL Xenon Halogen spare bulb	X-001.88.037	X-002.88.049
Replacement aperture cover for bulb. Reduces reflexes. [01]		B-000.11.212

HEINE BETA® 100 ENT Diagnostic Sets



Set complete with: **BETA100 Diagnostic Otoscope**
 1 set (6 pcs.) of reusable specula (B-000.11.221)
 10 UniSpec disposable specula, 4 mm dia. (B-000.11.237)
 spare bulb
 hard case

BETA100 Otoscope Sets	2.5V XHL	3.5V XHL
BETA battery handle	B-236.10.118	
BETA4 USB rechargeable handle with USB Cord and plug-in power supply		B-236.27.388
BETA4 USB rechargeable handle		B-236.27.387
BETA4 NT rechargeable handle with NT4 table charger		B-236.23.420

HEINE BETA® Diagnostic Set



Set complete with: **BETA200 Ophthalmoscope in XHL or LED,**
BETA100 Diagnostic Otoscope
 1 set (6 pcs.) of reusable specula (B-000.11.221)
 10 UniSpec disposable specula, 4 mm dia. (B-000.11.237)
 one spare bulb each for XHL version
 hard case

BETA Diagnostic Sets	2.5V XHL	3.5V XHL	3.5V XHL/LED*
BETA battery handle	A-234.10.118		
BETA4 USB rechargeable handle with USB Cord and plug-in power supply		A-234.27.388	A-234.25.388
BETA4 USB rechargeable handle		A-234.27.387	A-234.25.387
BETA4 NT rechargeable handle with NT4 table charger		A-234.23.420	A-234.25.420

*BETA100 Otoscope with XHL illumination and BETA200 LED Ophthalmoscope with LED illumination.



HEINE® K100 Diagnostic Otoscope

Diagnostic Otoscope with a high-impact polycarbonate housing



- ∴ Polycarbonate construction
- ∴ Easy instrumentation



A very cost-effective diagnostic otoscope with direct Xenon Halogen illumination. The head is moulded in high-impact polycarbonate.

For use with reusable specula or UniSpec disposable specula. With tip-adaptor (B-000.11.306) it is also possible to use AllSpec disposable tips.

- ∴ **Polycarbonate construction.** Shock-resistant.
- ∴ **Instrument head matt-black inside.** Eliminates reflexes.
- ∴ **XHL Xenon Halogen Technology.** Extremely bright, white light.
- ∴ **Large acrylic viewing window with 3x magnification.** Sharply-focused distortion-free image.
- ∴ **Swivelling viewing window built into instrument.** Useful for instrumentation, cannot be mislaid.
- ∴ **Insufflation port.** Reliable test of tympanic mobility.

K100 Diagnostic Otoscope	2.5V XHL	3.5V XHL
with 3 reusable specula 3.5/4.5/5.5 mm dia., without handle	B-001.11.576	B-002.11.576
without specula, without handle	B-001.11.575	B-002.11.575

XHL Xenon Halogen spare bulb	X-001.88.037	X-002.88.049
------------------------------	---------------------	---------------------

Replacement aperture cover for bulb [01] Reduces reflexes.	B-000.11.212
--	---------------------

HEINE® K100 ENT Diagnostic Sets



Set complete with: **K100 Diagnostic Otoscope**
 1 set (6 pcs.) of reusable specula (B-000.11.221)
 spare bulb
 soft pouch

K100 Otoscope Sets	2.5V XHL
BETA battery handle	B-237.10.118

Set complete with: **K100 Diagnostic Otoscope**
 3 reusable specula (B-000.11.222)
 soft pouch



K100 Otoscope Sets	2.5V XHL	3.5V XHL
BETA battery handle	B-245.10.118	
BETA4 USB rechargeable handle with USB Cord and plug-in power supply		B-245.27.388
BETA4 USB rechargeable handle		B-245.27.387
BETA4 NT rechargeable handle with NT 4 table charger		B-245.23.420

HEINE mini3000® Otoscope

Compact pocket otoscope with direct illumination



- ∴ Modern pocket otoscope
- ∴ Switches off automatically
- ∴ Optional rechargeable handle

Modern pocket otoscope in a unique, compact design. Can only be used with the mini3000 handle system. Available in black or blue.

- ∴ **Instrument head matt-black inside.** Eliminates reflexes.
- ∴ **Enhanced XHL Xenon Halogen Technology with 100% more light compared with conventional bulbs.** Very bright, concentrated white light for perfect illumination.
- ∴ **2-piece handle and head.** Easy to maintain, flexible. Compatible with other mini3000 instrument heads.
- ∴ **Viewing window with 3x magnification** and optimised casing surface for razor-sharp images and minimal reflection.
- ∴ **Swivelling viewing window built into instrument.** Useful for instrumentation, cannot be mislaid.
- ∴ **High-quality handle: Chrome-finished upper section/refined plastic.** Shockproof, sturdy, non-slip.
- ∴ **Attachment clip with integrated on/off switch.** Secure. Switches off automatically when returned to the pocket. 20,000 switch cycles guaranteed.
- ∴ **Replaceable batteries.** Size AA, or optional rechargeable battery with miniNT table charger*.

mini3000 Otoscope	2.5V XHL
with mini3000 battery handle and 1 set (4 pcs.) reusable tips and 5 of both AllSpec disposable tips 2.5 and 4 mm dia., with batteries	D-001.70.220
with mini3000 battery handle and 5 of both AllSpec disposable tips 2.5 and 4 mm dia., with batteries	D-001.70.210
with bulb, without handle and without accessories	D-001.70.206
XHL Xenon Halogen spare bulb	X-001.88.110



*To upgrade to a rechargeable instrument with miniNT table charger, please see page 145.

Available in black or blue. Please specify the colour you prefer when ordering. If not otherwise specified, we will supply black instruments.



HEINE mini3000® Diagnostic Sets



Set complete with: **mini3000 Otoscope**
 1 set (4 pcs.) reusable tips
 5 each of 2.5 and 4 mm dia. AllSpec disposable tips
 hard case

mini3000 Diagnostic Sets	2.5V XHL
---------------------------------	-----------------

mini3000 battery handle with batteries	D-851.20.021
--	---------------------



Set complete with: **mini3000 Ophthalmoscope, mini3000 Otoscope,**
 1 set (4 pcs.) reusable tips
 5 each of 2.5 and 4 mm dia. AllSpec disposable tips
 hard case

mini3000 Diagnostic Sets	2.5V XHL
---------------------------------	-----------------

2 mini3000 battery handles with batteries	D-873.21.021
---	---------------------

For information on HEINE battery and rechargeable handles see pages 140 – 145.

HEINE UniSpec® Disposable Specula



- ⊗: Single use only.
- ∴ **Disposable.** Hygienic and safe.
- ∴ **Original HEINE design and manufacture.** Fit positively to the otoscope.
- ∴ **Assured quality.** No sharp edges.
- ∴ **A clean, new speculum for each and every patient.** The right size is visible and instantly available.

UniSpec Disposable Specula (grey) for BETA100 and K100

Pack of 1000, 2.5 mm dia. (infants) 1000 pcs./1 pack	B-000.11.242
Pack of 1000, 4 mm dia. (adults) 1000 pcs./1 pack	B-000.11.241
UniSpec tip dispenser	B-000.11.146

⊗: Single use only.

Reusable Specula



- ∴ **Moulded in high-density SANALON S, smooth surface.** Easy to clean. Common germicides can be used. Autoclavable at up to 134 °C.
- ∴ **Ergonomic Design.** Painless and atraumatic insertion.
- ∴ **Metal security lock with bayonet fitting.** Long-lasting, positive fit to the otoscope.

Reusable Specula (black) for BETA100 and K100

1 set = 5 ear specula and 1 nose speculum	B-000.11.221
3 specula 3.5/4.5/5.5mm dia.	B-000.11.222
Ear speculum 2.2 mm dia.	B-000.11.215
Ear speculum 2.8 mm dia.	B-000.11.216
Ear speculum 3.5 mm dia.	B-000.11.217
Ear speculum 4.5 mm dia.	B-000.11.218
Ear speculum 5.5 mm dia.	B-000.11.219
Nose speculum 10 mm dia.	B-000.11.220

Tip Adaptor



- ∴ **All-metal construction.** Adaptor for AllSpec disposable tips (p. 028) for use with diagnostic otoscope (BETA100, K100).

Tip-Adaptor	B-000.11.306
-------------	---------------------

Insufflation Bulb



- ∴ **For pneumatic testing.**

Insufflation bulb for BETA100 and K100 Oscopes	B-000.11.240
--	---------------------



Tongue-Blade Holder

For wooden tongue-blades



- **XHL Xenon Halogen technology.** Concentrated illumination of oral cavity and pharynx.
- **Light-guide for bulb.** Avoids dazzle.

Tongue-Blade Holder	2.5V XHL	3.5V XHL
for wooden tongue-blades, without handle	B-001.12.302	B-002.12.302
XHL Xenon Halogen spare bulb	X-001.88.037	X-002.88.049
Replacement light-guide for bulb [01]		B-000.12.308

Tongue-Blade Holder

With blade ejector for use with HEINE disposable tongue-blades



- **XHL Xenon Halogen technology.** Concentrated illumination of oral cavity and pharynx.
- **Light-guide for bulb.** Avoids dazzle.
- **Blade ejector.** No need to touch used blades.
- **Only for HEINE disposable plastic tongue-blades.** Strong and hygienic.

Tongue-Blade Holder	2.5V XHL	3.5V XHL
with blade ejector, without handle	B-001.12.305	B-002.12.305
XHL Xenon Halogen spare bulb	X-001.88.037	X-002.88.049
Pack of 100 disposable plastic tongue-blades		B-000.12.304

HEINE mini3000® Tongue-Blade Holder

With blade ejector for HEINE disposable tongue-blades



Can only be used with the mini3000 handle system.

- **Finger-tip pressure releases the used blade.** No need to touch the blade after use.
- **XHL Xenon Halogen technology.** Concentrated illumination of oral cavity and pharynx.
- **Only for HEINE disposable tongue-blades.** Strong and hygienic.

mini3000 Tongue-Blade Holder	2.5V XHL
Tongue-blade holder head with bulb, without handle [01]	D-001.74.100
complete with mini3000 battery handle* and 5 disposable blades, with batteries [02]	D-001.74.118
XHL Xenon Halogen spare bulb	X-001.88.037
Pack of 100 disposable plastic tongue-blades	B-000.12.304

* Available in black or blue. Please specify the colour you prefer when ordering. If not otherwise specified, we will supply black instruments.

HEINE® mini-c Clip Lamp

Compact, long-life pocket diagnostic light



Sturdy, long-life pocket diagnostic light in a compact, modern design with chrome head. Bright, concentrated light thanks to unique XHL Xenon Halogen lens-bulb.

mini-c Clip Lamp only fits mini-c handles. The mini-c handle is not compatible with mini3000 instruments. Handle available in black or blue.

- ∴ **Clip Lamp with ear light for otoplasty.** The Ear Light is used to ensure that hearing aids fit correctly.
- ∴ **Compact, oval, attractive light.** Lies ergonomically in the hand.
- ∴ **High-quality handle: Chrome-finish upper section/refined plastic.** Shockproof, sturdy, non-slip.
- ∴ **Attachment clip with integrated on/off switch.** Secure. Switches off automatically when replaced in the pocket. 20,000 switch cycles guaranteed.
- ∴ **Replaceable batteries.** Size AAA.
- ∴ **Registered design.**

mini-c Clip Lamp	2.5V XHL
with batteries [01]	D-001.73.109
with ear light with batteries [02]	D-001.73.103
Ear light for mini-c Clip Lamp, 6 pieces in blister pack [03]	D-000.73.105
XHL Xenon Halogen spare bulb	X-001.88.108



HEINE mini3000 pocket instruments – a complete range of quality diagnostic instruments for your pocket. Available in black or blue. HEINE mini3000 Clip Lamp and mini-c Clip Lamp attachments are only available with a chrome head. Please specify the colour you prefer when ordering. If not otherwise specified, we will supply black instruments.



HEINE mini3000® Clip Lamp

Compact, long-life pocket diagnostic light

Sturdy, long-life pocket diagnostic light in a compact, modern design with chrome head. Bright, concentrated light thanks to unique XHL Xenon Halogen lens-bulb.

Can only be used with the mini3000 handle system. Handle available in black or blue.



[01]

[02]

- ∴ Long-life pocket light
- ∴ Switches off automatically
- ∴ Optional rechargeable handle



- ∴ **Compact, oval, attractive light.** Lies ergonomically in the hand.
- ∴ **2-piece handle and head.** Easy to maintain, flexible. Compatible with other mini3000 instrument heads.
- ∴ **Enhanced XHL Xenon Halogen lens-bulb with 100% more light compared to conventional bulbs.** Bright, focused light.
- ∴ **High-quality handle: Chrome-finish upper section/refined plastic.** Shockproof, sturdy, non-slip.
- ∴ **Attachment clip with integrated on/off switch.** Secure. Switches off automatically when replaced in the pocket. 20,000 switch cycles guaranteed.
- ∴ **Replaceable batteries.** Size AA, or optional rechargeable battery with mini NT table charger*.
- ∴ **Ear light for otoplasty [02].** The ear light is used to ensure that hearing aids fit correctly.

mini3000 Clip Lamp	2.5V XHL
complete with mini3000 battery handle, with batteries [01]	D-001.73.131
mini3000 Clip Lamp head without handle	D-001.73.130
Ear light for mini3000 Clip Lamp, 6 pieces in blister pack [02]	D-000.73.105
XHL Xenon Halogen spare bulb	X-001.88.107



*To upgrade to a rechargeable instrument with mini NT table charger, please see page 145.



HEINE mini3000 pocket instruments – a complete range of quality diagnostic instruments for your pocket. Available in black or blue. HEINE mini3000 Clip Lamp and mini-c Clip Lamp attachments are only available with a chrome head. Please specify the colour you prefer when ordering. If not otherwise specified, we will supply black instruments.



HEINE mini3000® Combi Lamp

Compact, all purpose illuminator with integrated tongue-blade holder



[01]

Sturdy, long-life pocket diagnostic light in a compact, modern design. Bright, concentrated light thanks to unique XHL Xenon Halogen lens-bulb.

Can only be used with the mini3000 handle system.
Available in black or blue.

- ∴ **Many applications.** Can be used as a general illuminator and as an illuminated tongue-blade holder for wooden blades and HEINE disposable blades.
- ∴ **2-piece handle and head.** Easy to maintain, flexible. Compatible with other mini3000 instrument heads.
- ∴ **Enhanced XHL Xenon Halogen lens-bulb with 100% more light compared with conventional bulbs.** Bright, focused light.
- ∴ **High-quality handle: Chrome-finish upper section / refined plastic.** Shockproof, sturdy, non-slip.
- ∴ **Attachment clip with integrated on/off switch.** Secure. Switches off automatically when replaced in the pocket. 20,000 switch cycles guaranteed.
- ∴ **Replaceable batteries.** Size AA, or optional rechargeable battery with mini NT table charger*.

mini3000 Combi Lamp	2.5V XHL
on mini3000 Battery Handle with 5 disposable blades and batteries	D-001.76.120
without handle	D-001.76.101
XHL Xenon Halogen spare bulb	X-001.88.107
Pack of 100 disposable tongue-blades [01]	B-000.12.304



*To upgrade to a rechargeable instrument with mini NT table charger, please see page 145.

HEINE mini3000 pocket instruments – a complete range of quality diagnostic instruments for your pocket. Available in black or blue. Please specify the colour you prefer when ordering. If not otherwise specified, we will supply black instruments.