

**If there's  
something  
to SEE,  
you'll  
DISCOVER  
it.**





## HEINE BETA® 200 S LED Ophthalmoscope

### Superior aspherical optics with LED<sup>HQ</sup> illumination

**LED<sup>HQ</sup>**  
LED NOW IN HEINE QUALITY.



- EXCLUSIVELY AT HEINE**
- Aspherical optical system
  - LED in HQ – Stepless dimmable
  - Aluminium frame system

BETA200S with 7 apertures



Cobalt blue filter, fixation star with polar coordinates, large spot, small spot, pinhole, slit, hemisphere



With red-free filter



HEINE AOS film

Exclusive dustproof design protects the precision optical components and ensures maintenance-free operation. The BETA200/200 S Ophthalmoscopes are the only instruments with an aluminium frame system. Optical components are flush-mounted on a cast aluminum frame, eliminating misalignment and making the instrument shock-resistant. The BETA200 S LED has virtually unlimited hours of working life. No need to ever replace bulbs. Maintenance-free for a lifetime.

- **Exclusive aspherical optical system (AOS)** for more information see the bottom of page 050.
- HEINE has set a new standard which maintains that only the best is good enough, from the selection of materials to processing, from light intensity to dimmability, and from thermal management to a colour rendering index as high as possible.  
**That's what we call LED in HEINE Quality – or LED<sup>HQ</sup>.**
- **Special optical interface to precisely integrate the LED illumination with the optical system** to ensure bright, homogeneous light during examinations.
- **The BETA200S Ophthalmoscope** accommodates higher refractive errors with a **28 single lenses Rekoss Disc** and features a 74 single step design on a non-continuous wheel avoiding extreme diopter jumps.
  - + in 1 D steps: +1 through +38 D
  - in 1 D steps: -1 through -36 D
- **Patented, unique, stepless dimming** from 3% to 100% with practical one-finger operation.
- **No stray light due to the recessed, multi-coated viewing window** – eliminates distractions.
- **Precise one-hand control of the instrument.** Ergonomic design offers flexibility while examining.
- **Suitable for large as well as small or undilated pupils.**
- **Ergonomic design** fits the orbita comfortably, and blocks out ambient light.
- **Full functionality of the BETA200 S LED is guaranteed with BETA Rechargeable Handels and the EN 100/EN 200 Wall Transformers.**

BETA200 S LED Ophthalmoscope	LED
without handle	C-008.30.120

## HEINE BETA® 200 S Ophthalmoscope

### Superior aspherical optics with XHL illumination



BETA200 S Ophthalmoscope with XHL Xenon Halogen illumination instead of LED illumination. Other technical specifications the same as the BETA200 S LED Ophthalmoscope.

- **XHL Xenon Halogen bulb** with bright illumination and authentic colour rendering.

BETA200 S Ophthalmoscope	2.5V XHL	3.5V XHL
without handle	C-001.30.120	C-002.30.120
XHL Xenon Halogen spare bulb	X-001.88.069	X-002.88.070



## HEINE BETA® 200 LED Ophthalmoscope

### Superior aspherical optics with LED<sup>HQ</sup> illumination



The ophthalmoscope with unique aspherical optics and all features of the BETA200S LED, but:



- ∴ Without macula aperture (pinhole)
- ∴ The BETA 200 Ophthalmoscope accommodates higher refractive errors with a 27 single lenses Rekoss Disc.

+ in 1 D steps:	1 – 10	15	20	40	D
- in 1 D steps:	1 – 10	15	20	25	35 D

BETA 200 LED Ophthalmoscope	LED
without handle	C-008.30.100

- ∴ Full functionality of the BETA 200 LED is guaranteed with BETA Rechargeable Handels and the EN 100/EN 200 Wall Transformers.

- EXCLUSIVELY AT HEINE**
- Aspherical optical system
  - LED in HQ with continuous brightness control
  - Aluminium frame system

#### BETA 200 with 6 apertures



Slit, fixation star with polar coordinates, cobalt blue filter, large spot, small spot, hemislot



With red-free filter

## HEINE BETA® 200 Ophthalmoscope

### Superior aspherical optics with XHL illumination

The ophthalmoscope with unique aspherical optics and all features of the BETA200 LED, but:

- ∴ XHL Xenon Halogen bulb with bright illumination and authentic colour rendering.



BETA 200 Ophthalmoscope	2.5V XHL	3.5V XHL
without handle	C-001.30.100	C-002.30.100

XHL Xenon Halogen spare bulb	X-001.88.069	X-002.88.070
------------------------------	--------------	--------------

BETA 200 M2 Ophthalmoscope	2.5V XHL	3.5V XHL
BETA 200 M2 Ophthalmoscope, without handle. Like BETA 200, except with pinhole instead of small spot and with fixation star aperture without polar coordinates.	C-001.30.102	C-002.30.102

#### BETA 200 M2 apertures



Slit, fixation star, cobalt blue filter, large spot, pinhole, hemislot



With red-free filter

HEINE BETA® 200/200S Ophthalmic Diagnostic Sets

with XHL or LED<sup>HO</sup> illumination



Set complete with: **BETA 200 S Ophthalmoscope in XHL or LED**  
1 spare bulb for XHL version, hard case

BETA 200 S Ophthalmoscope Sets	2.5V XHL	3.5V XHL	LED
BETA battery handle	<b>C-261.10.118</b>		
BETA 4 USB rechargeable handle with USB cord and plug-in power supply		<b>C-261.27.388</b>	<b>C-261.28.388</b>
BETA 4 USB rechargeable handle		<b>C-261.27.387</b>	<b>C-261.28.387</b>
BETA 4 NT rechargeable handle with NT 4 table charger		<b>C-261.23.420</b>	<b>C-261.24.420</b>



Set complete with: **BETA 200 Ophthalmoscope in XHL or LED**  
1 spare bulb for XHL version, hard case

BETA 200 Ophthalmoscope Sets	2.5V XHL	3.5V XHL	LED
BETA battery handle	<b>C-144.10.118*</b>		
BETA 4 USB rechargeable handle with USB cord and plug-in power supply		<b>C-144.27.388</b>	<b>C-144.28.388</b>
BETA 4 USB rechargeable handle		<b>C-144.27.387</b>	<b>C-144.28.387</b>
BETA 4 NT rechargeable handle with NT 4 table charger		<b>C-144.23.420</b>	<b>C-144.24.420</b>

\* Available with large battery handle X-001.99.120 (doesn't fit into hard cases). Please specify with your order.



Set complete with: **BETA 200 S Ophthalmoscope, BETA 200 Streak Retinoscope both with XHL or LED,**  
1 spare bulb for each instrument for XHL version, hard case

BETA 200 S Ophthalmoscope Sets	2.5V XHL	3.5V XHL	LED
BETA battery handle	<b>C-262.10.118</b>		
BETA 4 USB rechargeable handle with USB cord and plug-in power supply		<b>C-262.27.388</b>	<b>C-262.28.388</b>
BETA 4 USB rechargeable handle		<b>C-262.27.387</b>	<b>C-262.28.387</b>
BETA 4 NT rechargeable handle with NT 4 table charger		<b>C-262.23.420</b>	<b>C-262.24.420</b>



Set complete with: **BETA 200 Ophthalmoscope, BETA 200 Streak Retinoscope both with XHL or LED,**  
1 spare bulb for each instrument for XHL version, hard case

BETA 200 Ophthalmoscope Sets	2.5V XHL	3.5V XHL	LED
BETA battery handle	<b>C-145.10.118</b>		
BETA 4 USB rechargeable handle with USB cord and plug-in power supply		<b>C-145.27.388</b>	<b>C-145.28.388</b>
BETA 4 USB rechargeable handle		<b>C-145.27.387</b>	<b>C-145.28.387</b>
BETA 4 NT rechargeable handle with NT 4 table charger		<b>C-145.23.420</b>	<b>C-145.24.420</b>



HEINE Diagnostic Sets

 with XHL or LED<sup>HO</sup> illumination



Set complete with: **BETA200 Ophthalmoscope, BETA400 F.O. Otoscope both in XHL or LED,**  
 1 set (4 pcs.) of reusable tips (B-000.11.111)  
 5 of both AllSpec disposable tips 2.5 and 4 mm Ø  
 one spare bulb each for XHL version  
 hard case

Diagnostic Sets	2.5V XHL	3.5V XHL	LED
BETA battery handle	<b>A-153.10.118</b>		
BETA4 USB rechargeable handle with USB cord and plug-in power supply		<b>A-153.27.388</b>	<b>A-153.28.388</b>



Set complete: **BETA200 Ophthalmoscope, BETA200 F.O. Otoscope both with XHL or LED,**  
 1 set of reusable tips (B-000.11.111)  
 5 of both AllSpec disposable tips 2.5 and 4 mm dia.  
 one spare bulb each for XHL version  
 hard case

Diagnostic Sets	2.5V XHL	3.5V XHL	LED
BETA battery handle	<b>A-132.10.118</b>		
BETA4 USB rechargeable handle with USB cord and plug-in power supply		<b>A-132.27.388</b>	<b>A-132.28.388</b>



Set complete: **BETA200 Ophthalmoscope in XHL or LED, BETA100 Diagnostic Otoscope**  
 1 set of reusable specula (B-000.11.221)  
 10 UniSpec disposable tips 4 mm dia. (B-000.11.237)  
 one spare bulb each for XHL version  
 hard case

Diagnostic Sets	2.5V XHL	3.5V XHL	3,5V XHL/LED*
BETA battery handle	<b>A-234.10.118</b>		
BETA4 USB rechargeable handle with USB cord and plug-in power supply		<b>A-234.27.388</b>	<b>A-234.25.388</b>
BETA4 USB rechargeable handle		<b>A-234.27.387</b>	<b>A-234.25.387</b>
BETA4 NT rechargeable handle with NT 4 table charger		<b>A-234.23.420</b>	<b>A-234.25.420</b>

\*BETA 100 Otoscope with XHL illumination and BETA200 LED Ophthalmoscope with LED illumination.

HEINE Diagnostic Kits

with XHL or LED<sup>HO</sup> illumination



Kit complete with: **BETA200 Ophthalmoscope, BETA400 F.O. Otoscope both in XHL or LED,**  
 1 set (4 pcs.) of reusable tips (B-000.11.111)  
 5 of both AllSpec disposable tips 2.5 and 4 mm Ø  
 one spare bulb each for XHL version  
 without hard case

Diagnostic Kits	3.5V XHL	LED
<b>NEW!</b> 2x BETA4 NT rechargeable handle with NT4 table charger	<b>A-153.23.422</b>	<b>A-153.24.422</b>



Kit complete with: **BETA200 Ophthalmoscope, BETA200 F.O. Otoscope both with XHL or LED,**  
 1 set (4 pcs.) of reusable tips (B-000.11.111)  
 5 of both AllSpec disposable tips 2.5 and 4 mm Ø  
 one spare bulb each for XHL version  
 without hard case

Diagnostic Kit	3.5V XHL	LED
<b>NEW!</b> 2x BETA4 NT rechargeable handle with NT4 table charger	<b>A-132.23.422</b>	<b>A-132.24.422</b>



## HEINE K180® Ophthalmoscope

### Standard direct ophthalmoscope



- ∴ Reduces corneal reflex
- ∴ Dust resistant

A full-featured instrument at an economical price.

- ∴ **Precision spherical HEINE optics.** Corneal and iris reflexes are eliminated.
- ∴ **XHL Xenon Halogen Technology.** Bright, white light. Clear retinal image.
- ∴ **Range of lenses: 27 lenses from -35D to +40D.** Brilliant image even at high corrections.

+ in 1 D steps:	1 – 10	15	20	40	D
- in 1 D steps:	1 – 10	15	20	25	35 D

- ∴ **Ergonomical shape.** The instrument fits the orbita comfortably.
- ∴ **Soft orbital rest.** Steadies the instrument and protects your glasses.
- ∴ **Choice of 5 apertures.** For both large and small pupils. Choice of fixation star or cobalt blue filter for corneal examination.
- ∴ **Dust resistant housing.** Maintenance-free.
- ∴ **High-impact polycarbonate housing for durability.**

K180 Ophthalmoscope	2.5V XHL	3.5V XHL
with aperture wheel 1, without handle	<b>C-001.30.206</b>	<b>C-002.30.206</b>
with aperture wheel 2, with cobalt blue filter, without handle	<b>C-001.30.207</b>	<b>C-002.30.207</b>
XHL Xenon Halogen spare bulb	<b>X-001.88.084</b>	<b>X-002.88.086</b>

#### K180 apertures



**Aperture wheel 1:**  
Slit, red-free filter, fixation star with polar coordinates, large spot, small spot



**Aperture wheel 2:**  
Slit, red-free filter, cobalt blue filter, large spot, small spot

## HEINE K180® Diagnostic Sets



Set complete with: **K180 Ophthalmoscope**, in standard version with aperture wheel 1 soft pouch

K180 Ophthalmoscope Sets	2.5V XHL	3.5V XHL
BETA battery handle	<b>C-182.10.118</b>	
BETA4 USB rechargeable handle with USB cord and plug-in power supply		<b>C-182.27.388</b>
BETA4 USB rechargeable handle		<b>C-182.27.387</b>
BETA4 NT rechargeable handle with NT 4 table charger		<b>C-182.23.420</b>



Set complete with: **K180 Ophthalmoscope**, in standard version with aperture wheel 1

### K180 F.O. Otoscope

1 set of reusable tips (B-000.11.111)  
hard case

K180 Diagnostic Sets	2.5V XHL	3.5V XHL
BETA battery handle	<b>A-279.10.118</b>	
BETA4 USB rechargeable handle with USB cord and plug-in power supply		<b>A-279.27.388</b>
BETA4 USB rechargeable handle		<b>A-279.27.387</b>
BETA4 NT rechargeable handle with NT 4 table charger		<b>A-279.23.420</b>



## HEINE mini3000® LED Ophthalmoscope

### With LED illumination in HEINE Quality – LED<sup>HQ</sup>

**LED<sup>HQ</sup>**  
LED NOW IN HEINE QUALITY.



- ∴ Maintenance-free pocket instrument
- ∴ Optimal colour rendering
- ∴ Typ. 10 hours operation time

Modern ophthalmoscope with maintenance-free LED illumination. Its brightness and colour rendering are comparable with a HEINE XHL Xenon Halogen Ophthalmoscope.

- ∴ **Maintenance-free**, no need to ever replace the LED.
- ∴ LED Thermal management for a **consistent light output throughout the whole working life**.
- ∴ HEINE has set a new standard which maintains that only the best is good enough, from the selection of materials to processing, from light intensity and thermal management to a colour rendering index as high as possible.  
**That's what we call LED in HEINE Quality – or LED<sup>HQ</sup>.**
- ∴ **Exclusive Battery Performance Indicator:** When the instrument is switched on, the maximum light intensity is shown, then the light intensity is regulated down to the level that corresponds to the current charge status of the battery so you know when your batteries need changing.
- ∴ **Fade-Out Feature:** brightness reduces slowly even with low residual capacity, for even more efficient use of dry or rechargeable batteries.
- ∴ **Operation time typ. 10 hours.** The batteries need to be changed less often and the rechargeable batteries last longer.
- ∴ **For further technical specifications, please see mini3000 Ophthalmoscope with XHL illumination on page 059.**

mini3000 LED Ophthalmoscope	2.5V LED
with mini3000 battery handle, with batteries	<b>D-008.71.120</b>
with mini3000 rechargeable handle (please order mini NT table charger separately)	<b>D-008.71.200</b>
without handle	<b>D-008.71.105</b>

#### mini3000 apertures



Fixation star, large spot, small spot, hemispot, red-free filter



HEINE mini3000 pocket instruments – a complete range of quality diagnostic instruments for your pocket. Available in black or blue. Please specify the colour you prefer when ordering. If not otherwise specified, we will supply black instruments.



To upgrade to a rechargeable instrument with mini NT table charger, please see page 145.



HEINE mini3000® LED Diagnostic Sets



Set complete with: **mini3000 LED Ophthalmoscope**  
hard case

<b>mini3000 LED Ophthalmoscope Set</b>	2.5V LED
mini3000 battery handle with batteries	D-885.21.021



Set complete with: **mini3000 LED Ophthalmoscope, mini3000 LED F.O. Otoscope**  
1 set = 4 reusable tips (B-000.11.111)  
5 of both 2.5 and 4 mm dia. AllSpec disposable tips  
hard case

<b>mini3000 LED Ophthalmoscope, mini3000 LED F.O. Otoscope Set</b>	2.5V LED
with 2 mini3000 battery handles with batteries	D-886.11.021



Set complete with: **mini3000 LED Ophthalmoscope, mini3000 LED F.O. Otoscope**  
mini NT table charger  
5 of both 2.5 and 4 mm dia. AllSpec disposable tips

<b>mini3000 LED Ophthalmoscope, mini3000 LED F.O. Otoscope Set</b>	2.5V LED
with 2 mini3000 rechargeable handles	D-860.11.022*

\*with this Art. No. only available in black.

## HEINE mini3000® Ophthalmoscope

### Compact Pocket Ophthalmoscope with XHL illumination



∴ Modern pocket instrument

∴ 5 different apertures

∴ Dust resistant

Modern pocket ophthalmoscope with XHL Xenon Halogen bulb technology. Concentrated bright light for perfect illumination, a brilliant image and accurate colour rendering. Fixation star aperture with grey filter for reducing the light intensity. Excellent optics and best colour rendering in minimum dimensions, ideal for rounds and house calls. Can be used with the mini3000 handle system. Available in black and blue.

- ∴ **HEINE optics produce crisp, clear images of the whole area under examination** and minimise reflections.
  - ∴ **5 different apertures.** A full-function instrument incl. fixation star.
  - ∴ Grey filter for light-sensitive patients.
  - ∴ **Range of lenses: 18 lenses from -20D to +20D.**
- |   |   |   |   |   |   |   |    |    |     |
|---|---|---|---|---|---|---|----|----|-----|
| + | 1 | 2 | 3 | 4 | 6 | 8 | 10 | 15 | 20D |
| - | 1 | 2 | 3 | 4 | 6 | 8 | 10 | 15 | 20D |
- ∴ **Easy workflow,** because ophthalmoscopy is possible without dilation of the pupils.
  - ∴ **Attachment clip with integrated on/off switch.** Switches off automatically when returned to the pocket.
  - ∴ **Replaceable batteries.** Size AA, or optional rechargeable battery with mini NT table charger.\*
  - ∴ **2-piece handle and head.** Easy to maintain, flexible.
  - ∴ **Award-winning design.** Maximum quality with minimum dimensions.

<b>mini3000 Ophthalmoscope</b>	<b>2.5V XHL</b>
with mini3000 battery handle, with batteries	<b>D-001.71.120</b>
with mini3000 rechargeable handle (please order mini NT table charger separately)	<b>D-001.71.200</b>
without handle	<b>D-001.71.105</b>
XHL Xenon Halogen spare bulb	<b>X-001.88.106</b>

#### mini3000 apertures



Fixation star, large spot, small spot, hemispot, red-free filter



HEINE mini3000 pocket instruments – a complete range of quality diagnostic instruments for your pocket. Available in black or blue. Please specify the colour you prefer when ordering. If not otherwise specified, we will supply black instruments.



\* To upgrade to a rechargeable instrument with mini NT table charger, please see page 145.



HEINE mini3000® Diagnostic Sets



Set complete with: **mini3000 Ophthalmoscope**  
hard case

<b>mini3000 Ophthalmoscope Set</b>	2.5V XHL
mini3000 battery handle with batteries	D-852.10.021



Set complete with: **mini3000 Ophthalmoscope, mini3000 F.O. Otoscope**  
1 set = 4 reusable tips (B-000.11.111)  
5 of both 2.5 and 4 mm dia. AllSpec disposable tips  
hard case

<b>mini3000 Ophthalmoscope, mini3000 F.O. Otoscope Set</b>	2.5V XHL
with 2 mini3000 battery handles with batteries	D-873.11.021
as above but with <b>mini3000 Otoscope</b> instead of mini3000 F.O. Otoscope	D-873.21.021



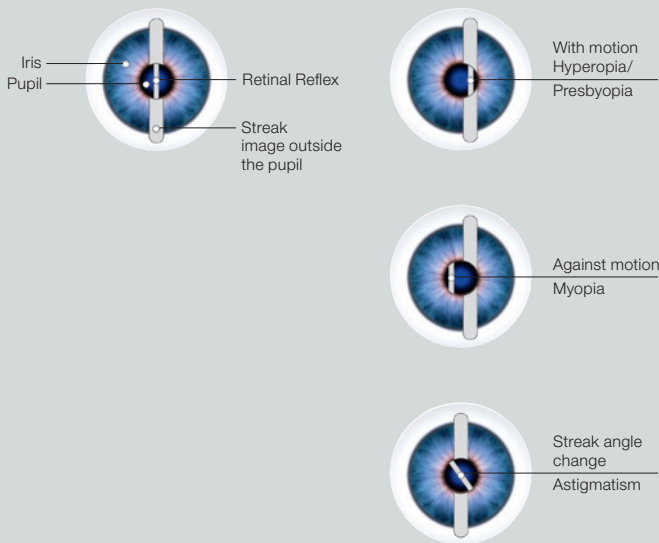
Set complete with: **mini3000 Ophthalmoscope, mini3000 F.O. Otoscope**  
mini NT table charger  
5 of both 2.5 and 4 mm dia. AllSpec disposable tips

<b>mini3000 Ophthalmoscope, mini3000 F.O. Otoscope Set</b>	2.5V XHL
with 2 mini3000 rechargeable handles	D-859.11.022*

\*with this Art. No. only available in black.



HEINE mini3000 pocket instruments – a complete range of quality diagnostic instruments for your pocket. Available in black or blue. Please specify the colour you prefer when ordering. If not otherwise specified, we will supply black instruments.



**Hand-held retinoscopes for objective refraction.**

The BETA200 Retinoscope is used for the exact measurement of the refractive error. Both myopia and hyperopia as well as astigmatism can be measured.

Two versions are available:

The Spot Retinoscope with a round light spot (available only as XHL variant) and the more widely-used Streak Retinoscope with a streak image which simplifies the examination.

**\*HEINE ParaStop**

The BETA200 Retinoscope with ParaStop features the latest multi-coated optics for an exceptionally bright fundus reflex and easier detection of the neutralisation point. ParaStop was developed by HEINE for the easy, precise selection of a parallel illumination beam. ParaStop simplifies and speeds up the precise detection of cylinder axis. ParaStop also simplifies the verification of the cylinder correction after refraction.

HEINE BETA® 200 LED Retinoscope with HEINE ParaStop®

With LED illumination in HEINE Quality – LED<sup>HQ</sup>



Homogenous LED illumination for precise streak image quality offers an easy and quick observation of the fundus reflex.



- ∴ **ParaStop.** Precise, easy selection of a parallel beam.\*
- ∴ **Brilliant, precise streak image** with a line width of typically 1.1 mm (ISO 12865 Standard < 1.5 mm) and a line length of 35 mm for a very bright, readily visible fundus reflex.
- ∴ HEINE has set a new standard which maintains that only the best is good enough, from the selection of materials to processing, from light intensity to dimmability, and from thermal management to a colour rendering index as high as possible.
- That's what we call LED in HEINE Quality – or LED<sup>HQ</sup>.**
- ∴ **Patented, unique, stepless dimming** from 3% to 100% with practical one-finger operation.
- ∴ **Ergonomic shape.** Protects the examiner's orbita from stray light.
- ∴ **Metal controls.** Long-lasting.
- ∴ **Single control for vergence and rotation.** Comfortable operation.
- ∴ **Maintenance-free.** Dustproof. LED with virtually unlimited hours of working life.
- ∴ **Integrated polarisation filter.** Eliminates stray light and internal reflexes for a brighter fundus reflex.
- ∴ **Detachable brow rest.** Increased comfort and control during examination.
- ∴ **Holder for fixation cards (optional).** For dynamic retinoscopy.
- ∴ **Full functionality of the BETA200 LED is guaranteed with BETA Rechargeable Handles and the EN 100/EN 200 Wall Transformers.**

BETA200 LED Streak Retinoscope	LED
without handle	C-008.15.353
Fixation cards with holder for dynamic retinoscopy	C-000.15.360

**EXCLUSIVELY AT HEINE**

- ParaStop
- Highly visible, bright fundus reflex
- Metal controls

## HEINE BETA® 200 Retinoscope with HEINE ParaStop®

## With XHL illumination

Technical specifications as for BETA200 LED Retinoscope, except:

- **XHL Xenon Halogen Technology.**
- **Streak or Spot Retinoscope.** Simply by changing the bulb.
- **Orange filter (optional).** Reduces patient dazzle without affecting the fundus reflex.



BETA200 Streak Retinoscope	2.5V XHL	3.5V XHL
with XHL Xenon Halogen bulb, without handle	<b>C-001.15.353</b>	<b>C-002.15.353</b>
XHL Xenon Halogen spare bulb	<b>X-001.88.087</b>	<b>X-002.88.089</b>
XHL Xenon Halogen spare bulb to convert to <b>Spot Retinoscope</b>	<b>X-001.88.088</b>	<b>X-002.88.090</b>
Orange filter for the bulb, for light-sensitive patients [01]	<b>C-000.15.359</b>	
Fixation cards with holder for dynamic retinoscopy	<b>C-000.15.360</b>	

## HEINE Ophthalmic Diagnostic Sets

with XHL or LED<sup>HO</sup> illumination



Set complete with: **BETA 200 Streak Retinoscope in XHL or LED**

1 spare bulb for XHL version,  
hard case

BETA 200 Retinoscope Sets	2.5V XHL	3.5V XHL	LED
BETA battery handle	<b>C-034.10.118*</b>		
BETA 4 USB rechargeable handle with USB cord and plug-in power supply		<b>C-034.27.388</b>	<b>C-034.28.388</b>
BETA 4 USB rechargeable handle		<b>C-034.27.387</b>	<b>C-034.28.387</b>
BETA 4 NT rechargeable handle with NT 4 table charger		<b>C-034.23.420</b>	<b>C-034.24.420</b>

\* Also available with large battery handle **X-001.99.120** (doesn't fit into hard cases). Please specify with your order.

Set complete with: **BETA 200 S Ophthalmoscope, BETA 200 Streak Retinoscope both with XHL or LED,**

1 spare bulb for each instrument for XHL version  
hard case



BETA 200S Diagnostic Sets	2.5V XHL	3.5V XHL	LED
BETA battery handle	<b>C-262.10.118</b>		
BETA 4 USB rechargeable handle with USB cord and plug-in power supply		<b>C-262.27.388</b>	<b>C-262.28.388</b>
BETA 4 USB rechargeable handle		<b>C-262.27.387</b>	<b>C-262.28.387</b>
BETA 4 NT rechargeable handle with NT 4 table charger		<b>C-262.23.420</b>	<b>C-262.24.420</b>

Set complete with: **BETA 200 Ophthalmoscope, BETA 200 Streak Retinoscope both with XHL or LED,**

1 spare bulb for each instrument for XHL version  
hard case



BETA 200 Diagnostic Sets	2.5V XHL	3.5V XHL	LED
BETA battery handle	<b>C-145.10.118</b>		
BETA 4 USB rechargeable handle with USB cord and plug-in power supply		<b>C-145.27.388</b>	<b>C-145.28.388</b>
BETA 4 USB rechargeable handle		<b>C-145.27.387</b>	<b>C-145.28.387</b>
BETA 4 NT rechargeable handle with NT 4 table charger		<b>C-145.23.420</b>	<b>C-145.24.420</b>



## HEINE® HSL 150 Hand-held Slit Lamp

### For the examination of the anterior segment



- ∴ Continuous slit adjustment
- ∴ Blue filter
- ∴ Ideal for domiciliary visits

Compact and lightweight, the portable HSL 150 is ideal for situations where a full-size slit lamp is not available or convenient. For the examination of the anterior segment in Human- and Veterinary medicine.

- ∴ **Slit size adjustable** from 0.2 mm x 10 mm to 4 mm x 14 mm.
- ∴ **6x magnification.**
- ∴ **Blue interference filter (FITC)**, can be selected for corneal examination.
- ∴ **Multi-coated optics for maximum light transmission.**
- ∴ **2.5V or 3.5V XHL Xenon Halogen Technology** for bright, white light comparable with the brightness of a classic slit lamp.
- ∴ **The HSL 150 instrument head weighs just 70g**, the lightest slit lamp of its kind.

HSL 150 for BETA or BETA SLIM handles	2.5V XHL	3.5V XHL
HSL 150, head only	<b>C-001.14.602</b>	<b>C-002.14.602</b>
XHL Xenon Halogen spare bulb	<b>X-001.88.098</b>	<b>X-002.88.099</b>
Replacement blue filter attachment for HSL 150	<b>C-000.14.605</b>	

## HEINE® HSL 10x Loupe Attachment

### Loupe attachment with 10x magnification



For HSL 150. With precision magnification optics for crisp, clear images.

- ∴ **10x magnification** when combined with HSL 150 Loupe.
- ∴ **Increased working distance** from examiner to patient.
- ∴ **Large field of view.**
- ∴ **With an additional detachable eyepiece** to steady the instrument on the brow and avoid stray light. Can be replaced with a soft cap, suitable for spectacle-wearers.

HSL 10x Loupe Attachment	<b>C-000.14.606</b>
--------------------------	---------------------

## HEINE® HSL 150 Hand-held Slit Lamp Sets



[01]

Set complete with: **HSL 150 Hand-held Slit Lamp**  
BETA SLIM handle (compact)

Hand-held Slit Lamp Sets	2.5V XHL	3.5V XHL
BETA SLIM battery handle, in soft pouch, without spare bulb [01]	<b>C-252.10.105</b>	
BETA 4 SLIM NT rechargeable handle and NT4 table charger*, spare bulb, in hard case		<b>C-266.20.471</b>

\*NT4 table charger incl. reducer insert



## HEINE® LAMBDA 100 Retinometer

### For assessing potential visual acuity



The LAMBDA 100 Retinometer is the first compact instrument for assessing potential visual acuity of patients with cataracts and other opacities.  
LAMBDA 100 – clinically tested with excellent results.\*

- ∴ **Simple, easy-to-use controls.** Reliable diagnosis, easy to operate.
- ∴ **Compact, lightweight (100 g).** Can be used anywhere – even bedside.
- ∴ **XHL Xenon Halogen Technology and brightness control.** Avoids patients discomfort from dazzle.

#### Three simple steps for assessing potential visual acuity with LAMBDA 100

1. Switch on instrument, select acuity, adjust pattern of lines, reduce ambient lighting.
2. Rest Retinometer against the patient's forehead. Scan the pupil with the red light spot to find a "window" through which the patient can recognise the pattern of lines.
3. Select progressively finer lines with different angles until the patient can no longer recognise the angle. The value of the last recognisable angle indicates potential acuity.

#### EXCLUSIVELY AT HEINE

- Light and compact
- USB charging facility
- Clinically tested



[01]



LAMBDA 100 Retinometer	2.5V XHL	3.5V XHL
with acuity scale 20/300 to 20/25 (scale 2), without handle	C-001.35.015	C-002.35.015
with decimal scale 0.06 to 0.8 (scale 1), without handle	C-001.35.010	C-002.35.010
XHL Xenon Halogen spare bulb	X-001.88.077	X-002.88.078
Patient card [01]		C-000.35.005

LAMBDA 100 Retinometer Kits	3.5V XHL
<b>Kit 1:</b> LAMBDA 100 with acuity scale (scale 2), 1 Patient card, BETA 4 USB rechargeable handle with USB cord and plug-in power supply, spare bulb, without hard case	C-037.27.388
<b>Kit 2:</b> LAMBDA 100 with decimal scale (scale 1), 1 Patient card, BETA 4 USB rechargeable handle with USB cord and plug-in power supply, spare bulb, without hard case	C-038.27.388



0°  
Visus = 0.5  $\left(\frac{20}{40}\right)$



45°  
Visus = 0.32  $\left(\frac{20}{60}\right)$



90°  
Visus = 0.06  $\left(\frac{20}{300}\right)$

LAMBDA 100 Examples of various acuity grating patterns (visual angle 1°)

\* Validated by the study "Accuracy of the HEINE LAMBDA 100 Retinometer" in Investigative Ophthalmology & Visual Science, May 2008, Vol. 49, Southern College of Optometry, Memphis, Tennessee and the study "Reliability of predictable postoperative visual acuity of cataracts as measured by HEINE LAMBDA 100 retinometer preoperatively" by the Departamento de Oftalmologia, May – June 2010, São Paulo, Brasil.



## Ophthalmic Examination Lamp

### For examination of the anterior segment and cornea in focal light



- **Small and light.** Ideal for house calls and rounds.
- **5 different apertures.** Helps detect erosion, edema and foreign bodies on the cornea.
- **Apertures focused at 100mm working distance.**

Ophthalmic Examination Lamp	2.5V XHL	3.5V XHL
without handle	C-001.14.400	C-002.14.400

XHL Xenon Halogen spare bulb	X-001.88.032	X-002.88.047
------------------------------	--------------	--------------

#### Aperture combination



Slit, three different spots, cobalt blue filter for fluorescence examination

## HEINE Finoff Transilluminator

### For scleral transillumination



[01]

- **Detachable Cobalt blue filter.** Suitable for fluorescence examinations.

Finoff Transilluminator	2.5V XHL	3.5V XHL
for scleral transillumination, without handle	C-001.17.080	C-002.17.080

XHL Xenon Halogen spare bulb	X-001.88.077	X-002.88.078
------------------------------	--------------	--------------

Aperture with Cobalt blue filter for Finoff Transilluminator [01]	C-000.17.081	
---	--------------	--

## HEINE® iC2 Funduscope

### Mobile, digital ophthalmoscopy

**LED<sup>HQ</sup>**  
LED NOW IN HEINE QUALITY.



HEINE iC2  
Application film



Free  
HEINE iC2 App

- EXCLUSIVELY AT HEINE**
- Broad field of view
  - High resolution images
  - Mobile documentation



- **Always with you wherever you are.** With a weight of just 300g, practical dimensions and cable-free operation, it's ideal for examining children as well as bedridden, injured and disabled patients.
- **Comfortable for both the doctor and patient.** In addition to the conveniently longer working distance for both sides, full adjustment of LED brightness is particularly pleasant for the patient. Needless to say, it corresponds to the highest international standard for photobiological safety.
- **Continuous dioptre compensation.** Adjustable from +15 to -15 dioptres, complemented by autofocus with +/-3 dioptres.
- **High-quality fundus images:** Optical precision lens system with 4 aspherical high-performance lenses. Convenient documentation of completed examinations. Excellent imaging quality at up to 12 MP\*\*.
- **Field of view up to 34°.** The angle of view is therefore approximately four times as big as that of conventional direct ophthalmoscopes with 9°.
- **Straightforward scanning of the periphery,** simply by tilting the iC2 back and forth.
- HEINE has set a new standard which maintains that only the best is good enough, from the selection of materials to processing, from light intensity and thermal management to a colour rendering index as high as possible.  
**That's what we call LED in HEINE quality – or LED<sup>HQ</sup>.**
- **NEW! Set it down and charge in one step.** The new iC2 Charger is the world's first inductive charging station to receive approval for a medical product. Say goodbye to charging cables!
- **A film says more than a thousand words.** A brief film shows you just how practical, simple and fast fundus photography can be. Scan this QR code or go to [www.heine.com/video/heine\\_ic2\\_en\\_gb/](http://www.heine.com/video/heine_ic2_en_gb/).
- **See for yourself what the iC2 app is capable of:** intuitive localisation of images, continuous magnification, storage of additional patient data, documentation of the current situation and, most notably, provision of images via email.

iC2 Set/7 for iPhone 7 and 8	LED
iC2 with mounting case smartphone iC 2/7 for Apple® iPhone® 7 and 8*, iC2 Charger, USB cord with E4-USB medical approved plug-in power supply and case	<b>C-152.40.211</b>
iC2 Set/6 for iPhone 6/6s	LED
See above, but with mounting case smartphone iC 2/6 for Apple iPhone 6/6s*	<b>C-151.40.211</b>
iC2 Set/5 for iPhone 5s and SE	LED
See above, but with mounting case smartphone iC 2/5 for Apple iPhone 5s and SE*	<b>C-150.40.211</b>
Accessories	
USB cord with E4-USB medical approved plug-in power supply	<b>X-000.99.303</b>
Mounting case smartphone iC 2/7 for Apple iPhone 7/8	<b>C-000.33.152</b>
Mounting case smartphone iC 2/6 for Apple iPhone 6/6s	<b>C-000.33.151</b>
Mounting case smartphone iC 2/5 for Apple iPhone 5s/SE	<b>C-000.33.150</b>
Case for iC2	<b>C-150.00.000</b>

\* The Apple iPhone is not included in the scope of delivery. Apple, the Apple logo and iPhone are trademarks of Apple Inc., registered in the U.S. and other countries. App Store is a service mark of Apple Inc.

\*\* With iPhone from Version 6s



HEINE Indirect Ophthalmoscopes

LED HQ



OMEGA 500

LED HQ

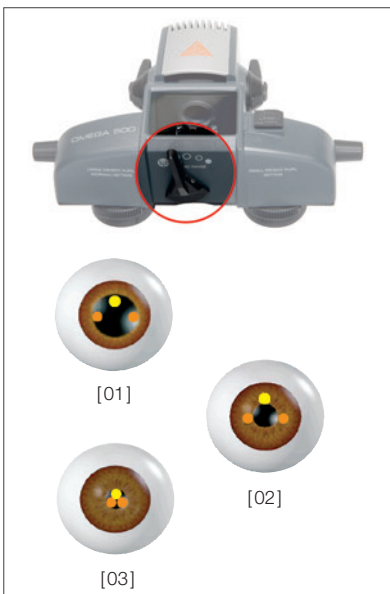


SIGMA 250 SIGMA 250 M2

- Synchronized
- Separate
- 
- 
- 
- Diffusor
- 
- 
- 
- LED HQ illumination
- XHL illumination
- Headband
- S-FRAME
- Teaching mirror
- Product variant with integrated camera
- On the Instrument
- On the power source
- Headband-mounted battery
- mPack UNPLUGGED
- mPack
- mPack mini
- EN 50 Table- or / Wall transformer
- Plug-in transformer

Page

Convergence and parallax adjustment		
<input type="checkbox"/>	<input type="checkbox"/>	<input type="checkbox"/>
Apertures		
<input type="checkbox"/>	<input type="checkbox"/>	<input type="checkbox"/>
<input type="checkbox"/>	<input type="checkbox"/>	<input type="checkbox"/>
<input type="checkbox"/>	optional	optional
Filters		
<input type="checkbox"/>	optional	optional
<input type="checkbox"/>	optional	optional
<input type="checkbox"/>	<input type="checkbox"/>	<input type="checkbox"/>
Versions		
<input type="checkbox"/>	<input type="checkbox"/>	<input type="checkbox"/>
<input type="checkbox"/>	<input type="checkbox"/>	<input type="checkbox"/>
<input type="checkbox"/>	optional	optional
<input type="checkbox"/>	<input type="checkbox"/>	<input type="checkbox"/>
optional	optional	optional
optional	<input type="checkbox"/>	<input type="checkbox"/>
Brightness control		
<input type="checkbox"/>	<input type="checkbox"/>	<input type="checkbox"/>
Mobile power supply		
<input type="checkbox"/>	<input type="checkbox"/>	<input type="checkbox"/>
<input type="checkbox"/>	<input type="checkbox"/>	<input type="checkbox"/>
Stationary power supply		
<input type="checkbox"/>	<input type="checkbox"/>	<input type="checkbox"/>
<input type="checkbox"/>	<input type="checkbox"/>	<input type="checkbox"/>
069 - 073	074/075	



**Synchronized Convergence and Parallax Adjustment System**

The advanced One-Step Small and Variable Pupil Control maximizes stereopsis in dilated pupils and allows for the instant adjustment of the optical system to ensure fully illuminated, stereoscopic views through pupils as small as 1 mm in diameter.

- **Dilated Pupil.** In the case of a dilated pupil, the HEINE Synchronized Convergence and Parallax Adjustment System adjusts the left and right observation paths as far apart as possible (large angle of convergence) providing for maximum stereopsis (depth perception). The illumination beam is automatically positioned as high as possible relative to the observation plane (creating a large angle of parallax) in order to maximise illumination and minimise unwanted reflections [01].
- **Undilated Pupils and viewing in the Periphery.** In cases of pupils that can not, or should not be dilated, a binocular view with full illumination is not possible without adjustments of the optical system [02]. By adjusting the Small and Variable Pupil Control Lever located on the bottom of the OMEGA Series instruments, the angle of convergence between left and right observation paths is reduced and the angle of parallax (light path) is automatically reduced in one, simple step. The observer can now enjoy a fully illuminated, binocular view with excellent stereopsis [03] even through a pupil as small as 1 mm in diameter, or in cases where the pupil appears as an ellipse as a result of viewing the periphery.

## HEINE OMEGA® 500 Binocular Indirect Ophthalmoscope

### Quality with LED<sup>HQ</sup> or XHL illumination



∴ LED<sup>HQ</sup> or XHL technology

∴ Unique synchr. adjustment

∴ Dustproof

With its LED<sup>HQ</sup> or XHL technology and perfect colour rendering, the OMEGA500 has set the standard for reliability and performance.

- ∴ **Unique “Synchronized Adjustment of Convergence and Parallax”** for high quality, stereoscopic fundus images through any pupil size. Precise selection of the observation and illumination optics for small pupils down to 1.0 mm.
- ∴ **Excellent optical performance due to the multi-coated illumination system.** Exact vertical alignment of the illumination with the observation path further minimising the reflections.
- ∴ **Due to the mounting of the optics on an aluminium frame**, the OMEGA500 is solid, long lasting, and is guaranteed to be dustproof.
- ∴ **The HC50 L Headband Rheostat controls the LED<sup>HQ</sup> illumination as well as the XHL Xenon-Halogen illumination.**

#### Technical Specifications:

- ∴ **Apertures and Filters:** Can be “locked” into a desired position.
- ∴ **Adjustment Levers:** Also feature a “Friction-Clutch” (“Safety-Clutch”) to protect mechanisms from forced adjustment while in the “lock” position.
- ∴ **Increased PD Range:** From 46 – 74 mm.
- ∴ **Soft Touch Controls:** All key adjustment controls feature soft touch surfaces for precise and positive adjustment control.



HEINE OMEGA500  
Operation film



HEINE OMEGA500  
Accessories film



Separate fine-tuning of the illumination beam  $\pm 4^\circ$  in addition to synchronised convergence and parallax adjustment.



HEINE Diffuser, 3 integrated spot sizes: small spot, medium and large. 3 integrated filters: red-free, cobalt blue and yellow filters.



Synchronised adjustment of convergence and parallax.



LED NOW IN HEINE QUALITY.

### LED<sup>HQ</sup>-Technology for HEINE OMEGA® 500:

LED now in HEINE quality. The sophisticated LED<sup>HQ</sup> system provides for longer operation time, exact dimmability and excellent colour rendering.

- ∴ HEINE has set a new standard which maintains that only the best is good enough, from the selection of materials to processing, from light intensity to dimmability, and from thermal management to a colour rendering index as high as possible.
- That's what we call LED in HEINE Quality – or LED<sup>HQ</sup>.**
- ∴ **Special optical interface to precisely integrate the LED illumination with the optical system** to ensure bright, homogeneous light throughout the whole working life of the LED – for an accurate diagnosis.
- ∴ With the **Rheostat HC50 L** the light intensity can be precisely adjusted – especially in the range of low light intensities.
- ∴ **Convert your XHL Xenon Halogen OMEGA500 to LED:** With an upgrade kit the OMEGA500 can easily and quickly be adapted to the new technology.



## HEINE OMEGA® 500 Headband

### with unique features



- ∴ **Articulating hinge** provides vertical adjustment of the rear band of the headband for individual placement. Secure and perfect fit for all shapes and sizes.
- ∴ **Ergonomic design** for optimal weight transfer across the surface of the entire headband (no pressure points).
- ∴ **Softer, malleable material.** Provides even and comfortable fit of the headband.
- ∴ **Calibrated overband position** ensures optics are in true horizontal position for precise adjustment and alignment.
- ∴ **Integrated cables** in overband eliminates the usual “cable loop” from instrument to headband.
- ∴ **Registered design.**



[01]

**Technical Specifications:**

∴ **HC50 L Headband Rheostat:** Easily mounted on the left or right sides of the headband [01].



[02]

∴ **Integrated flip-up adjustment:** To raise optics out of the line of sight. Can be mounted on the left or right side of the headband. Optics can be flipped and locked at 0°, 12.5°, 47.5°, 60° degrees [02].

∴ **Mechanically reinforced adjustment mechanisms:** For durability and precise adjustment of the headband.

## HEINE OMEGA® 500 Binocular Indirect Ophthalmoscope

### Optimum performance and quality



OMEGA500 Ophthalmoscope	XHL – 6V	LED – 6V
with XHL Xenon Halogen bulb (5W) on Headband (not including HC50L Headband Rheostat)	C-004.33.500	
on Headband with HC50 L Headband Rheostat and Connecting Cord Cinch	C-004.33.507	C-008.33.502
XHL Xenon Halogen spare bulb 6V, 5W, standard equipment	X-004.88.111	



[01]

Extension Cord Cinch-Cinch, 2m [01]	C-000.33.510
-------------------------------------	--------------



[02]

Connecting Cord Cinch to	
--------------------------	--

EN50 charger /mPack /plug-in transformer for HC50L, 1,6m [02]	X-000.99.667
---	--------------



[03]

HC50L Headband Rheostat (without plug-in transformer)	X-095.16.325
---	--------------

Plug-in transformer for HC50 L Headband Rheostat	X-095.16.330
--	--------------

Teaching mirror [03]	C-000.33.209
----------------------	--------------

## HEINE OMEGA® 500 Kits



### XHL OMEGA 500 LED Conversion Kits.

With these kits, a XHL illumination OMEGA500 can be converted to LED illumination.

Upgrade-Kits OMEGA 500	LED – 6V
Upgrade-Kit OMEGA500 with LED module [01] and HC50L [02]	<b>X-008.16.325</b>
LED module for OMEGA500 [01]	<b>X-008.87.200</b>

### OMEGA 500 Kits

Recommended product order configurations to ensure the most flexibility the OMEGA500/EN50 System has to offer. The following kits include main system elements but no carrying cases or ancillary accessories.



OMEGA 500 Kits	XHL – 6V	LED – 6V
Consists of OMEGA500, HC50L Headband Rheostat, connecting cord Cinch		
<b>Kit 1:</b> with plug-in transformer for HC50L	<b>C-004.33.537</b>	<b>C-008.33.531</b>
<b>Kit 2:</b> with EN50 transformer complete (incl. EN50 Rheostat Control Module, extension cord Cinch-Cinch 2m, 90° angled adaptor, instrument support)	<b>C-004.33.538</b>	
<b>Kit 3:</b> with mPack and plug-in transformer (incl. 90° angled adaptor) [01]	<b>C-004.33.539</b>	<b>C-008.33.533</b>

## HEINE OMEGA® 500 Sets



### Set complete with OMEGA 500 Head-worn Indirect Ophthalmoscope

1 scleral depressor large, 1 scleral depressor small, A.R. 20D ophthalmoscopy lens, pad with 50 fundus charts, teaching mirror, 1 spare bulb if with XHL illumination, in hard case with:

OMEGA 500 Sets	XHL – 6V	LED – 6V
HC50L Headband Rheostat with plug-in transformer (incl. connecting cord Cinch)	<b>C-283.40.320</b>	<b>C-283.41.320</b>
<b>EN50-m Charger with mPack, HC50L Headband Rheostat</b> (incl. connecting cord Cinch, 90° angled adaptor, 2m extension cord Cinch-Cinch, instrument support)	<b>C-283.40.302</b>	
<b>mPack with plug-in transformer, HC50L Headband Rheostat</b> (incl. connecting cord Cinch, 90° angled adaptor)	<b>C-283.40.670</b>	<b>C-283.41.670</b>



## HEINE OMEGA® 500 UNPLUGGED

### with headband battery mPack UNPLUGGED



- ∴ 100% freedom of movement
- ∴ Low weight
- ∴ Charge status indicator



100% freedom of movement – no cable connections!

The OMEGA500 Ophthalmoscope with mPack UNPLUGGED rechargeable battery allows one-of-a-kind mobility without restriction or hindrance caused by cables, cords, or similar connections.

- ∴ **Rechargeable battery integrated on the headband.** No interfering cable connections.
- ∴ **Lightweight with balanced weight distribution.** High level of comfort. Lightweight and compact.
- ∴ **mPack UNPLUGGED rechargeable battery.** Charging time typ. 2 hours. Operating time typ. 8 hours with LED illumination, typ. 2 hours with XHL illumination (with standard lamp 6V, 5W).
- ∴ **Charge Status Indicator.** Indication of remaining operating time.
- ∴ **Can be recharged by wall charger or plug-in transformer.**
- ∴ **Intelligent charging system.** Automatic changeover from operating to charging mode (in the wall unit). Battery-friendly charging.
- ∴ **Direct operation possible while charging** through the use of the mobile plug-in transformer.
- ∴ **Top safety standards.** Integrated charge and performance checks during operation. Lithium polymer technology. UL-compliant.
- ∴ **System compatibility** with mPack for even greater capacity.

OMEGA500 UNPLUGGED Kits	XHL – 6V	LED – 6V
Consists of OMEGA500, HC50L Headband Rheostat, without case:		
<b>Kit 5:</b> with plug-in transformer UNPLUGGED, 1 x mPack UNPLUGGED	<b>C-004.33.541</b>	<b>C-008.33.535</b>
<b>Kit 6:</b> with Wall unit EN50 UNPLUGGED charger, 2 x mPack UNPLUGGED	<b>C-004.33.542</b>	<b>C-008.33.536</b>
<b>Kit 7:</b> with Wall unit EN50 UNPLUGGED charger, 1 x mPack UNPLUGGED	<b>C-004.33.543</b>	<b>C-008.33.537</b>
XHL Xenon Halogen spare bulb 6V, 5W	<b>X-004.88.111</b>	
Extension cord from plug-in transformer UNPLUGGED to mPack UNPLUGGED, 2m		<b>X-000.99.668</b>

## HEINE OMEGA® 500 UNPLUGGED Set



Set complete with **OMEGA 500 UNPLUGGED**, 1 scleral depressor large, 1 scleral depressor small, A.R. 20D ophthalmoscopy lens, pad with 50 fundus charts, teaching mirror, 1 spare bulb in case of XHL illumination, in hard case with:

OMEGA 500 UNPLUGGED Set	XHL – 6V	LED – 6V
mPack UNPLUGGED and plug-in transformer UNPLUGGED	<b>C-284.40.670</b>	<b>C-284.41.670</b>



## HEINE OMEGA® 500 with DV 1 Digital Video Camera

### High-resolution digital imaging of the fundus



- EXCLUSIVELY AT HEINE**
- Integrated focus adjustment
  - 5 MP resolution
  - Simple operation

- **5 MP resolution.** Capable of capturing high-resolution videos or still shots of examinations. No disturbing picture noise due to increased light sensitivity of the camera – also suitable for the examination of premature babies. Perfect for sharing the examiner’s view with a wider audience, educating patients on the diagnosis, recording techniques for presentations, and patient records.
- **Simple operation.** Digital imaging without any additional adjustments. Simply start recording and the image as seen through the OMEGA500 will be displayed on the screen.
- **Comfortable and balanced fit.** The OMEGA500 headband distributes the low weight of the compact camera and optics perfectly and ensures a comfortable fit.
- **Integrated focus adjustment.** The high depth of focus combined with an easily accessible focus adjustment, even for the assistant, ensures crisp, in-focus imaging.
- **Interface and software.** Will plug into any laptop or computer via USB 2.0 interface. Supplied with software program for video recording and image capture.
- **Cable-free power source system** with mPack UNPLUGGED rechargeable battery.
- **Integrated camera design.** The integrated camera system ensures precise alignment with the optical system of the Indirect Ophthalmoscope. Robust, dustproof design. No further adjustment of mirrors necessary for digital imaging.



HEINE OMEGA 500 with DV 1 film

OMEGA 500 with DV 1	XHL – 6V	LED – 6V
OMEGA 500 with DV 1 and mPack with plug-in transformer	C-004.33.560	C-008.33.560
OMEGA 500 with DV 1 and mPack UNPLUGGED with plug-in transformer	C-004.33.561	C-008.33.561
OMEGA 500 with DV 1 and 2x mPack UNPLUGGED with EN 50 UNPLUGGED	C-004.33.562	C-008.33.562
OMEGA 500 with DV 1 and USB 2.0 cord	C-004.33.563	C-008.33.563
XHL Xenon Halogen spare bulb	X-004.88.111	
USB 2.0 cord for OMEGA 500 with DV 1		X-000.99.206

For more information, please refer to [www.heine.com/omega500dv1](http://www.heine.com/omega500dv1)

## HEINE OMEGA® 500 with DV 1 Sets



Set complete with: **OMEGA 500 Head-worn Indirect Ophthalmoscope with DV 1 Digital Video Camera,**

HC50L Headband Rheostat, USB 2.0 cord, 1 scleral depressor large, 1 scleral depressor small, A.R. 20 D ophthalmoscopy lens, pad with 50 fundus charts, 1 spare bulb if with XHL illumination, in hard case with:

OMEGA 500 with DV 1 Sets	XHL – 6V	LED – 6V
mPack UNPLUGGED and plug-in transformer	C-176.40.670	C-176.41.670



## HEINE SIGMA® 250 Binocular Indirect Ophthalmoscope

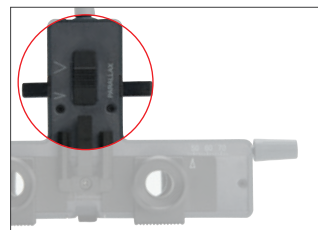
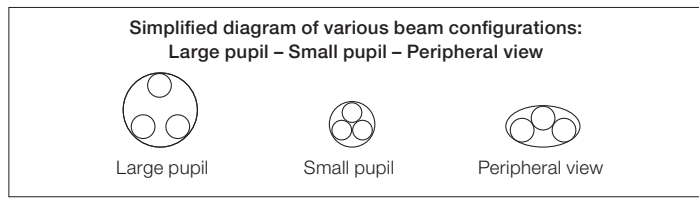
### Spectacle-mounted Ophthalmoscope – with LED<sup>HQ</sup> illumination



- ⚡ Ultra light
- 👁 For any pupil size
- 💡 LED in HQ

The spectacle-mounted indirect Ophthalmoscope to suit any pupil size. Two separate controls for selecting the **ideal setting of parallax and convergence guarantee completely illuminated stereo views in pupils up to 2 mm, as well as viewing in the periphery.** The illumination beam can be adjusted by  $\pm 3^\circ$  to eliminate reflexes.

- ⚡ **Power Source mPack mini – compact and light power source with USB charging option.** With a weight of just 95 g and dimensions of 44x23x101 mm, this mobile power source is now approx. 70 % smaller and lighter than its predecessor. Typ. 11 hours in continuous operation at maximum power.  
**Please note:** The SIGMA250 is still compatible only with mPack mini.
- ⚡ **Extremely light, 110 g without frame.** Light and comfortable.
- ⚡ HEINE has set a new standard which maintains that only the best is good enough, from the selection of materials to processing, from light intensity to dimmability, and from thermal management to a colour rendering index as high as possible.  
**That's what we call LED in HEINE Quality – or LED<sup>HQ</sup>.**
- ⚡ **Lightweight frame.** High tensile carbon fiber construction is lightweight and has excellent stability.
- ⚡ **Illumination beam adjustable  $\pm 3^\circ$ .** Eliminates reflexes.
- ⚡ **Integrated red-free filter.** Improves contrast.
- ⚡ **Optional blue and yellow filters.**
- ⚡ **Large and small apertures.**
- ⚡ **Dust proof.** Maintenance-free.
- ⚡ **PD selection from 47 to 72 mm.** Suits any user.
- ⚡ **Optics on swivel mount.** Unrestricted view.
- ⚡ **Optional clip-in correction frame** for prescription lenses.



Parallax adjustment



Convergence adjustment

For further information on the mPack mini, please see page 150.

## HEINE SIGMA® 250 Accessories



Teaching mirror [01]	C-000.33.302
Blue filter [02]	C-000.33.313
Yellow filter [03]	C-000.33.314
Diffusor [04]	C-000.33.315
Case for filters, empty [05]	C-000.33.316
Clip-in correction frame for prescription lenses [06]	C-000.32.309

HEINE SIGMA® 250 Kits

**LED HQ**  
LED NOW IN HEINE QUALITY.



SIGMA 250 Kits		without power source	with mPack mini
<b>SIGMA 250 Kit with S-FRAME</b>			
SIGMA 250			
S-FRAME			
Retaining cord		C-008.33.340	C-008.33.341
Cleaning fluid			
<b>SIGMA 250 M2 Kit with S-FRAME and micro spot aperture (instead of small aperture)</b>			
SIGMA 250 M2			
S-FRAME			
Retaining cord		C-008.33.345	C-008.33.346
Cleaning fluid			

Ophthalmic Instruments

HEINE SIGMA® 250 Sets

**LED HQ**  
LED NOW IN HEINE QUALITY.



SIGMA 250 Sets		with mPack mini
<b>SIGMA 250 Set with S-FRAME</b>		
SIGMA 250		
S-FRAME		
mPack mini with E4-USB plug-in transformer and USB cord		
Scleral depressor small		
Scleral depressor large		
A.R. 20 D ophthalmoscopy lens		
Teaching mirror		
Blue and yellow filters		
Diffusor		
Retaining cord		
Cleaning fluid		
mPack mini Belt Clip		
Carrying case		C-281.41.671
<b>SIGMA 250 M2 Set with S-FRAME</b>		
SIGMA 250 M2		
S-FRAME		
mPack mini with E4-USB plug-in transformer and USB cord		
Scleral depressor small		
Scleral depressor large		
A.R. 20 D ophthalmoscopy lens		
Teaching mirror		
Blue and yellow filters		
Diffusor		
Retaining cord		
Cleaning fluid		
mPack mini Belt Clip		
Carrying case		C-279.41.671

## HEINE Hand-held Indirect Ophthalmoscope, MONOCULAR

### Compact monocular ophthalmoscope

An unusually compact instrument, which is recommended for visits and mobile use.

- ∴ **Durable metal construction.** Long working life.
- ∴ **Built-in interference red-free filter.** Improves contrast.
- ∴ **All optical components made of coated optical glass.** Precise images and high light intensity.
- ∴ **Adjustable light beam.** Useful for small pupils.
- ∴ **One hand operation.** All control elements can be easily reached with the thumb.
- ∴ **+3 D lens attachment.** An aid to accommodation, magnifies the image.
- ∴ **Add-on binocular attachment available.** Instrument can be up-dated for binocular use.



[01]

<b>Monocular Hand-held Indirect Ophthalmoscope</b>	<b>3.5V XHL</b>
with +3D lens attachment and orbit rest extension	<b>C-002.33.001</b>
XHL Xenon Halogen spare bulb	<b>X-002.88.050</b>
+3D lens attachment only [01]	<b>C-000.33.101</b>
Orbit rest extension, for spectacle wearers only	<b>C-000.33.104</b>

## HEINE Hand-held Indirect Ophthalmoscope, BINOCULAR

Adding the binocular attachment to the Hand-held Indirect Ophthalmoscope allows stereoscopic examination. PD selection from 54 to 74 mm.

- ∴ **Symmetrical PD selection.** Quick and easy to adjust.
- ∴ **Multi-coated precision optics.** Exceptional image quality.



[01]

<b>Binocular Hand-held Indirect Ophthalmoscope</b>	<b>3.5V XHL</b>
with +3D lens attachment and orbit rest extension	<b>C-002.33.002</b>
XHL Xenon Halogen spare bulb	<b>X-002.88.050</b>
Binocular attachment only [01]	<b>C-000.33.106</b>

Model Eyes

**HEINE Skia/Retinoscope Trainer**



This model eye is ideal for teaching and practice. The pupil diameter and refractive error can be set exactly and are therefore reproducible. The front lens compartment holder accepts up to two trial lenses. The cylinder can be read from the graduated scale.

- ∴ **Scale:** 0° – 180° for cylinder determination.
- ∴ **Diameter of pupil variable:** 2, 3, 4, 5, 6, 8 mm.
- ∴ **Optics:** Optical glass, achromatic lens, focal length F = 32 mm.
- ∴ **Trainer body made of metal:** Extremely stable and durable.
- ∴ **Angle of examination variable.**

**Model Eye**

Skia/Retinoscope Trainer

**C-000.33.011**

Model Eyes

**HEINE Ophthalmoscope Trainer**



This model eye was developed for the teaching environment. It is the first adjustable model from HEINE to mimic the human eye. Precise, durable and with a multitude of uses, it simplifies the learning process and encourages the student to practice with the ophthalmoscope.

- ∴ **Diameter of pupil.** Variable 2, 3, 4, 5, 6, 8 mm.
- ∴ **Aspheric optical glass lens.** Focal length F = 18mm. Lens curvature matches that of the retina.
- ∴ **Trainer body.** Made of metal – extremely stable and durable.
- ∴ **Angle of examination,** variable.

**Model Eye**

Ophthalmoscope Trainer

**C-000.33.010**



## HEINE® A.R. Aspheric Ophthalmoscopy Lenses

### With anti-reflex A.R. coating

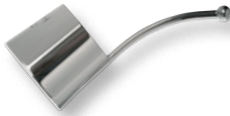


- ⋮ **Advanced triple multicoating.** Reduced reflection, excellent light transmission.
- ⋮ **Lens curvature matches that of the retina.** Perfect, distortion-free retinal image.
- ⋮ **Large diameter.** Significant increase in field of view without magnification loss.
- ⋮ **Aspheric surfaces.** Reduced distortion of the periphery.

#### Ophthalmoscopy lens with case

A.R. 16D, 54 mm dia.	C-000.17.225
A.R. 20D, 50 mm dia.	C-000.17.228
A.R. 30D, 46 mm dia.	C-000.17.231

## Scleral Depressor



#### Scleral depressor

Scleral depressor, large*	C-000.17.300
Scleral depressor, small*	C-000.17.301

\*autoclavable

## Fundus Charts



#### Fundus charts

Pad with 50 pcs.	C-000.33.208
------------------	--------------

## Combi Case



[01]



[02]

Combi case respectively hard case for head-worn indirect binocular ophthalmoscopes. Features a deep, dense foam insert to protect instruments, and can be worn over the shoulder or as a backpack (removable straps included).

#### Combi case/Hard case

Combi case [01] for indirect ophthalmology sets C-162, C-276, C-278, C-283, C-284 (432 mm x 330 mm x 197 mm)	C-079.03.000
Hard case [02] for indirect ophthalmology sets C-162, C-276, C-278, C-283, C-284 (470 mm x 400 mm x 190 mm)	C-079.00.000

Carrying cases and storage cases may deviate in shape and colour.