



## arco – The new generation of gynaecological examination chairs



# arco

## Optimised use, high level of comfort, first-class design

The new arco combines excellent design with state-of-the-art technology and great value for money.

### **Ergonomic**

In combination with the individually adjustable head cushion attached magnetically to the chair, the head section cushions, back cushions, and seat cushions have a special convex shape and offer patients pleasant and comfortable seating. With an access height of only 550 mm, even older or physically challenged patients can easily take a seat on the chair, and even at its lowest level, the seat position remains horizontal.

### **Strong**

Designed for a working load of 250 kg, the chair offers great safety and many treatment options even for adipose patients.

### **Time-saving**

Optimised adjustment speed and up to four freely selectable memory positions (depending on model) allow quick adjustment to the relevant position.

### **Functional**

The deep gyn. cut-out of 155 mm offers improved access to the examination area. Even if the patient is in a position of pelvic elevation, the rinsing basin stays horizontal.

### **Mobile**

Concealed castors (optional) make the examination chair a mobile unit, enabling flexible use of the treatment area and room layout. The central locking mechanism allows fast and secure positioning.

### **Hygienic**

Level, enclosed areas and the absence of corners and edges make for improved hygienic conditions and easy cleaning. Even the area under the arco can be cleaned thanks to its mobility (optional).

## Made in Germany





With its versatile, colourful options and an award-winning design, arco leaves nothing to be desired and adds a visual highlight to the examination room.



**reddot** award 2017  
winner

Illustration showing:  
114.8700.0 with foot supports 101.0456.0, leatherette cover 101.0473.0, rinsing basin with convenient holder 101.0495.0, LED ambient illumination 101.04870 and colour panel 101.0488.0.

arco colours:  
Upholstery raspberry 103  
Powder-coated finish white aluminium RAL 9006  
Plastic elements silver grey

# arco combined with Orbit

## A clear design concept for gynaecological surgeries



Whether it's the low access height, making it easier for patients to take their seat, a memory function allowing a quick adjustment to the relevant position or the deep gyn. cut-out, which facilitates the examination - arco is designed for the special requirements of daily medical practice.

arco chairs are perfectly supplemented by Orbit - the modular supply and disposal concept for gynaecological workplaces, which can be adjusted to every set-up. arco thus forms part of a particularly functional furnishing concept that is available in many attractive colour schemes.

For further information on our Orbit range, please see our catalogue no. 75 or our website.



Colours in the illustration:  
arco:  
upholstery raspberry red 103  
powder coated finish white aluminium RAL 9006  
plastic elements silver grey

Swivel stool:  
upholstery raspberry 103

Orbit:  
cabinet bodies white aluminium RAL 9006  
front panels heather violet RAL 4003  
bar handles semicircular white aluminium RAL 9006  
plastic elements silver grey

# arco for gynaecology CE



## Description



114.8500.0

### **arco 100 114.8500.0**

Examination and treatment chair, electromotive pelvic elevation. Back section attached to seat section at fixed angle (50°), seat height adjustable from 550 mm to 1,000 mm by pelvic elevation. Adjustment functions activated by foot control.



114.8600.0 and 114.8700.0

### **arco 100 M 114.8600.0**

Examination and treatment chair, same as 114.8500.0 model, but with additional memory function for two positions. Adjustment and memory functions activated by hand and foot control.

### **arco 200 M 114.8700.0**

Examination and treatment chair, with memory function for four positions, pelvic elevation and **foot supports (accessory) adjustable by electromotor**, back section attached to seat section at fixed angle (50°), seat height adjustable from 550 mm to 1000 mm by pelvic elevation. Adjustment and memory functions activated by hand and foot control.

## **Attention!**

**All basic types without leg positioning system, please choose from three options! (page 8/9)**



## **Hand and foot control**

- Flexible positioning of the detachable foot control for a stress-free and comfortable working environment
- Saves and retrieves up to 4 memory positions
- Soft start-up of the chair movements
- Control of all motion sequences through foot and hand controls

Illustrations:  
arco colours:  
upholstery lime 99  
powder-coated finish white aluminium RAL 9006  
plastic elements silver grey

### Standard equipment:

Ergonomic upholstery on seat, back rest and head rest, SST rinsing basin, in plastic frame, fixed in position with swinging mechanism, detachable, 325 x 175 x 65 mm (W x D x H) 2.5 l volume. Magazine for holding paper roll of 400 or 500 mm width, max. diam. 140 mm, possibility to cover either the back and seat section or only the seat section with paper. With foot control, base plate with 4 levelling screws, silver grey plastic cladding, frame powder coated according to our colour chart. Upholstery according to colour chart. Foot support mounts for quick removal or individual swivelling on a horizontal level of foot supports or Göpel-type leg supports with integrated handles (not available for equipment with side rails).

Connection cable 3 m with mains plug.  
Connection: 100 - 240 V, 50/60 Hz,  
max. 0.94 kW.  
Country-specific versions on request.

Net weight approx. 96 kg  
(Model nos. 114.8500.0 and 114.8600.0)  
Net weight approx. 100 kg  
(Model no. 114.8700.0)

Safe working load: 250 kg

### Powder coated finish:

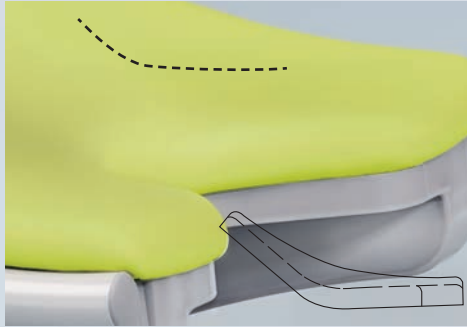
High quality powder coating. Gloss finish, extremely knock and scratch resistant. Easy to clean, resistant to disinfectants and environmental conditions. Colours available as per SCHMITZ colour chart at no extra cost.

### Upholstery:

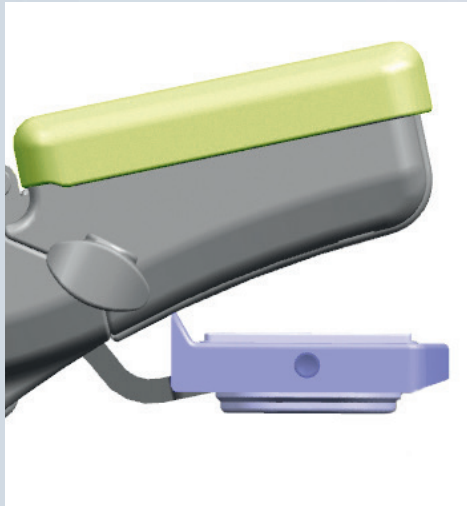
Foam material on support plate, with first-class, hard-wearing leatherette coverings. Colours available as per SCHMITZ colour chart at no extra cost (classic and comfort).

### When ordering:

Please state the following when ordering a chair from the arco series: Upholstery colour see colour chart, powder coating for frame see colour chart

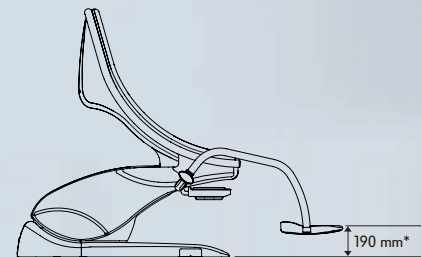
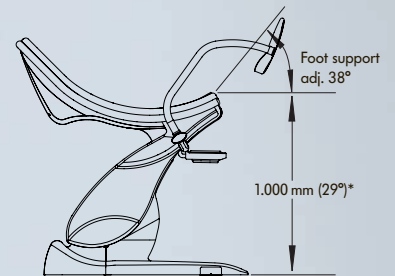
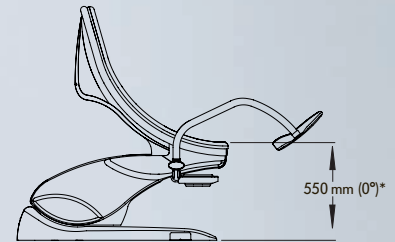


Seat profile formed straight for a relaxed and professional examination position.



Chrome nickel steel rinsing basin, in plastic frame, fixed in position with swinging mechanism

### Positionings, Dimensions:



Base plate 1.134 x 605 mm

Width of upholstery:  
595 mm (seat section) to 650 mm (back section)  
Thickness: 50 mm

\* +11 mm in connection with mobility 101.0466.0.  
Design and dimensions are subject to change.



Pelvic elevation  
114.8500.0 to 114.8700.0

Electromotive adjustment of foot supports  
114.8700.0

# arco

## Leg support systems

1

### **Foot supports (pair) 101.0456.0**

with integrated handles, powder coated according to colour chart, can be swivelled to the side, lockable. Plastic covers of transparent material as protection for the foot supports.

2

### **Leg supports, Göpel type, with integrated handle (pair) 101.0457.0**

with integrated handles, powder coated according to colour chart, leg supports with integral foam upholstery in silver grey, including fastening strap, rod of stainless steel 18/10.

3

### **Göpel leg support (piece) 101.0459.0**

integral foam upholstery in silver grey, including fastening strap, rod of stainless steel 18/10, without attachment clamp. (requires side rails 101.0461.0 and 101.1670.0 attachment clamps)

### **Attachment clamp (piece) 101.1670.0**

revolving, stainless steel 18/10, for installation on side rails.

4

### **Side rails (pair) 101.0461.0**

for the seat section, stainless steel 18/10, 25 x 10 mm, 290 mm long.







2

101.04570



3

101.0461.0, 101.0459.0 and 101.1670.0



4

101.0461.0

# arco

## Accessories

1  
**Leatherette cover (pair) 101.0473.0**  
for integrated handles of foot supports,  
according to colour chart, with zip fastener.

2  
**Leatherette cover (pair) 101.0474.0**  
for integrated handles of Göpel-type leg supports,  
according to colour chart, with zip fastener.

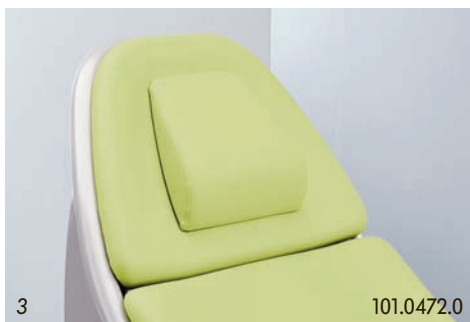
3  
**Cushion 101.0472.0**  
with magnetic attachment, leatherette cover  
according to colour chart.

4  
**Protective covers (pair) 101.0475.0**  
for foot supports.

**Protective cover 101.0476.0**  
**(upon request)**  
of transparent plastic material, for seat section.  
(w/o ill.)

5  
**Paper roll 101.0489.0**  
500 mm wide, for storing in the integrated  
compartment.

6  
**Rinsing basin**  
**with convenient holder 101.0495.0**  
to maintain horizontal position; basin made of  
chrome nickel steel with plastic frame  
325 x 175 x 65 mm (W x L x H), 2.5 litre volume.





6

101.0462.0



8

101.0467.0

6

**Side rail (piece) 101.0462.0**

for the seat section, stainless steel 18/10, 25 x 10 mm, 150 mm long.

7

**2 Power sockets 101.0482.0**

acc. to EN 60601-1.

(subsequent fitting not possible)

**2 Power sockets 101.0483.0**

similar to 101.0482.0, but „Swiss type“ socket, subsequent fitting not possible.

(w/o ill.)

**Socket for potential equalisation 101.4810.0**

8

**Colposcope support 101.0467.0**

for Leisegang, Leica, Kaps and Zeiss systems, RHS or LHS fitting. For Kaps and Zeiss systems, please order required mounting tube with attachment from your colposcope supplier. (w/o colposcope)



7

101.0482.0 and 101.0481.0



9

101.0487.0 and 101.0488.0



10

101.0469.0

9

**LED Ambient illumination 101.0487.0 (upon request)**

LED illumination on both sides above the colour panel, choice of 13 different colours, interchangeable thanks to a switch under the colour panels, tone-in-tone colour shade already adapted to the selected pad colour (white LED for brown, black and grey pads).

**Colour panel 101.0488.0**

Coloured panel, in line with colour of pads.

10

**Doctor's foot support 101.0469.0**

LH mounting, patient's POV.

**Doctor's foot support 101.0468.0**

RH mounting, patient's POV.

(w/o ill.)

11

**Mobility 101.0466.0**

2 swivel-type double castors, Ø 75 mm, 4 fixed-type castors Ø 50 mm, electrically conductive, with central lock (retrofitable).

**Note:**

**Must not be used for patient transport!**



11

101.0466.0

# Design example

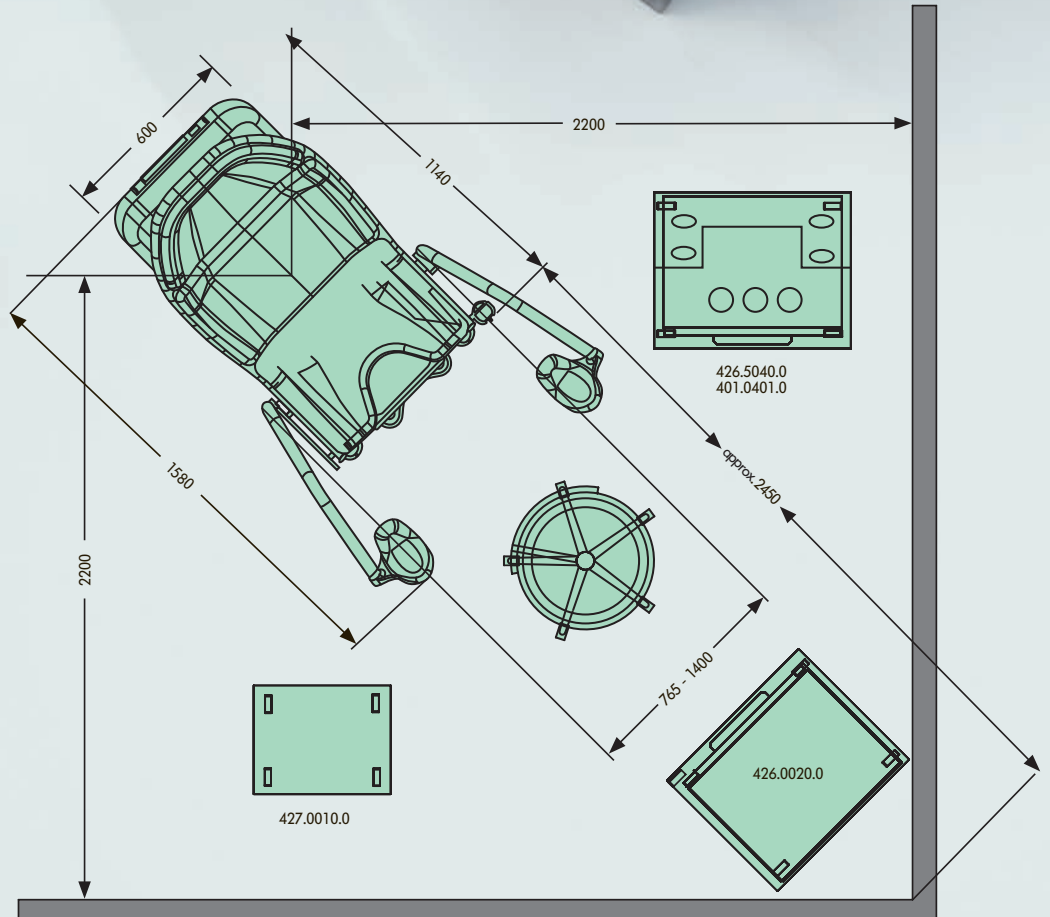


## Illustrated colours:

arco:  
 Upholstery lime 99  
 Plastic enamel coating white aluminium RAL 9006  
 Plastic elements silver grey

Examination seat:  
 Upholstery lime 99

Orbit:  
 Cabinet bodies white aluminium RAL 9006  
 Front panels leaf green RAL 1206050  
 Handles semicircular lemon green RAL 1008060  
 Plastic elements silver grey



# Online colour configurator: You choose the colour

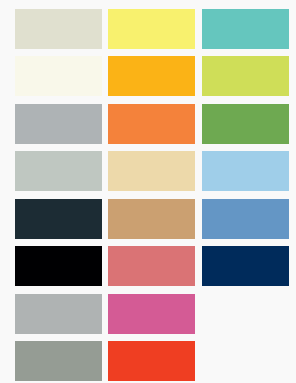


## Selected colours:

Powder coated finish:  
white aluminium RAL 9006  
Upholstery:  
raspberry 103  
Plastic claddings:  
silver-grey

Please note that due to individual monitor / graphics card settings the colours shown in our colour configurator may not match the real colours. We can therefore not assume any liability for their being correctly displayed. The illustration shows model ref. 114.8700.0 with foot supports ref. 101.0456.0, leatherette covers 101.0473.0, rinsing basin with convenient holder 101.0495.0 and colour panel 101.0488.0.

## Powder coated finishes



## Leatherette comfort



## Leatherette classic



## Discover new, colourful worlds

With the SCHMITZ online colour configurator, you can try out various colour combinations and consider them at your leisure.

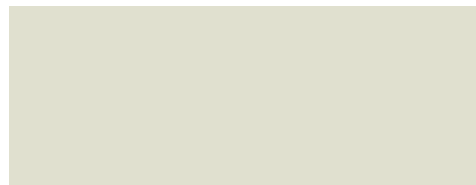
With a total of 22 upholstery colours and 22 colours for powder-coated finish, you have many options to create colourful highlights in your surgery.

Whether muted or cheerful, classic or modern, elegant or extravagant - with our tool, you will certainly find the right colour for you in no time at all.

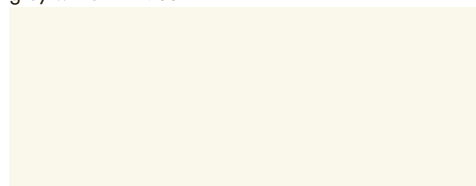
Be inspired:  
[www.schmitz-soehne.com](http://www.schmitz-soehne.com)

# Colours for powder coated finishes, upholsteries and plastic elements

## Powder coated finishes



grey white RAL 9002



pure white RAL 9010



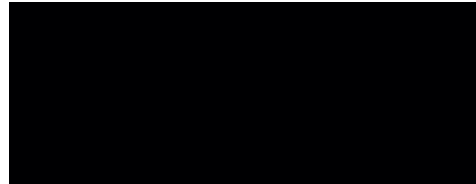
alabaster grey RAL 0007500\*



light grey RAL 7035



anthracite grey RAL 7016



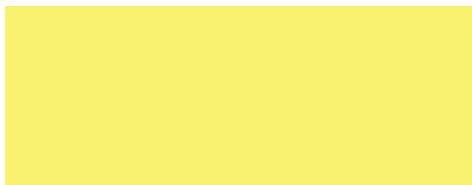
jet black RAL 9005



white aluminium RAL 9006



grey aluminium RAL 9007



colza yellow RAL 1009050\*



signal yellow RAL 1003



pastel orange RAL 2003



light ivory RAL 1015



sahara beige RAL 0607030\*



antique pink RAL 3014



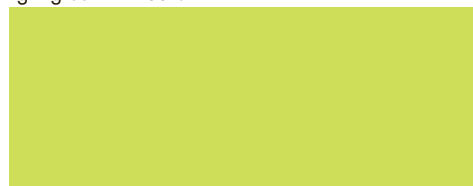
heather violet RAL 4003



vermilion RAL 2002



light green RAL 6027



lemon green RAL 1008060\*



leaf green RAL 1206050\*



white blue RAL 2408015\*

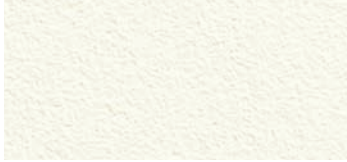


light blue RAL 2606030\*



sapphire blue RAL 5003

## Leatherette comfort



blossom white 84



gold yellow 86



mandarin 98



red carmine 92



raspberry 103



caribbean blue 82



atlantic blue 83



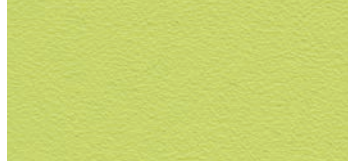
topaz 105



opal green 100



apple green 94



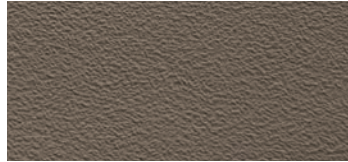
lime 99



milky coffee 102



natural brown 93



hazelnut 104



sand beige 101



stone grey 96

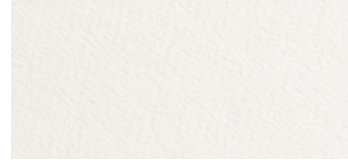


shale grey 97

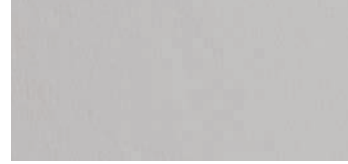


titan grey 91

## Leatherette classic



white 53



silver-grey 55

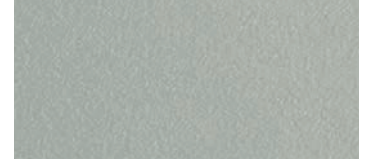


ocean 52



black 57

## Plastic elements



silver-grey

**We recommend:**  
**Special cleaner for leatherette**  
**Model no. 2019878**  
500 ml spray bottle.  
(packaging unit 3 bottles)

**Cleaning set for leatherette**  
**Model no. 2026973**  
1 x 500 ml spray bottle and a brush.

Please refer to our separate operating manual for upholsteries for detailed information on cleaning and disinfection of upholsteries.



# SCHMITZ

A SENSE OF CONFIDENCE

**SCHMITZ u. Söhne  
GmbH & Co. KG**

P. O. Box 14 61  
58734 Wickede (Ruhr)  
Germany (postal address)  
Zum Ostenfeld 29  
58739 Wickede (Ruhr)  
Germany (visiting address)  
T +49 (0)2377 84 0  
F +49 (0)2377 84 135  
www.schmitz-soehne.com  
export@schmitz-soehne.de

Technical service, hotline:  
T +49 (0)2377 84 549  
F +49 (0)2377 84 210  
service@schmitz-soehne.de

All articles including correspond-  
ing accessories marked with  
the CE label meet the standards  
for medical devices acc. to  
MPG and the EC regulation  
93/42/EEC.

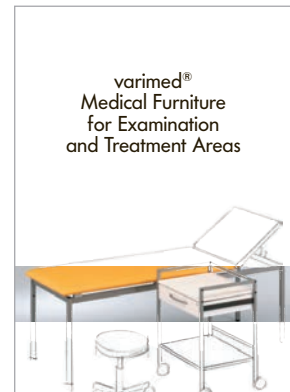
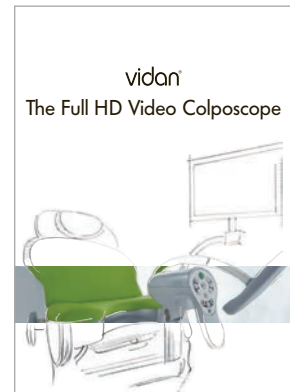
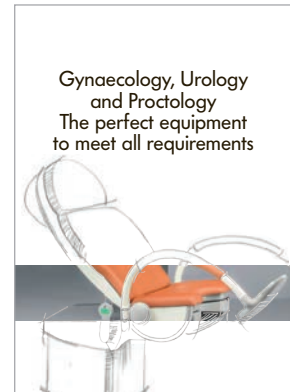


The products may only be used  
for their intended purpose of use.  
Please also observe our operating  
manual!



[f/schmitz.soehne](https://www.facebook.com/schmitz.soehne)

**Information on  
our establishments  
worldwide can be found  
on our website.**



Our goods and services are to be understood ex works. Deliveries are effected via our authorized partners or branch offices. The company reserves the right to alter the design, construction, dimensions and finish of its products without notice. All relevant dimensions and weights are to be understood as approximate information/data. Due to technical reasons colour deviations are possible. The articles shown in this catalogue are not authorized for sale in the United States. SCHMITZ Catalogue No. 101, 10.2017 GB  
Nominal charge 3.00 Euro.