



  
Partnership

## HSG Pre & Post Vacuum - Medium Size Autoclave

# Medical Center Autoclaves

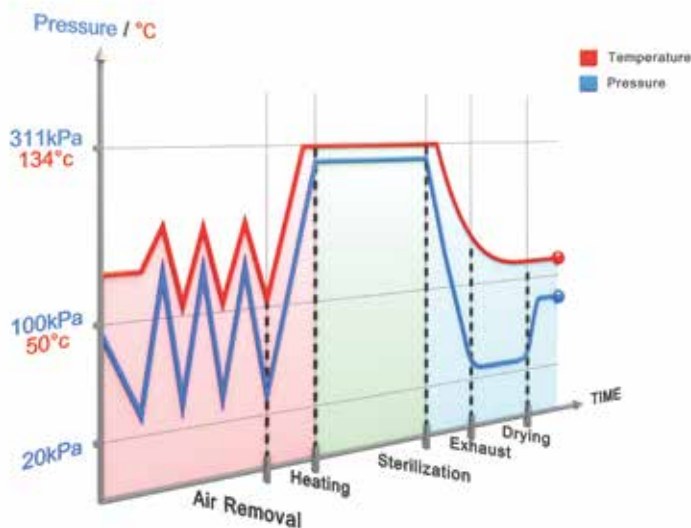
## Hospital Grade Performance for OR and Large Clinics

The HSG autoclave line includes 85 liter and 160 liter autoclaves that are ideal for medical centers and large clinics. HSG autoclaves provide hospital grade sterilization and a medium loading capacity at a cost-effective price that meets the highest international standards.

As a family owned business Tutt-nauer has manufactured infection control products for over 89 years that have developed a reputation for the quality, high performance, sophisticated features, and the ability to satisfy customers' expectations. Tutt-nauer's sterilization and infection control products are trusted at over 350 000 autoclave installations throughout the world.



- ▶ **COMPACT**
- ▶ **GREEN**
- ▶ **PLUG & PLAY**
- ▶ **EASY TO MOVE - EASY TO INSTALL**
- ▶ **COST-EFFECTIVE PRICING**



### Pre & Post Vacuum Performance

Pre & Post vacuum performance is achieved with a built-in vacuum pump used for fractionated pre vacuum air removal eliminating air pockets from all load types and maximizing efficient steam penetration throughout the entire load. After the sterilization stage the vacuum pump is used for post-vacuum drying.



## COMPACT

**Narrow Design** - fits through standard doorways

**Minimal Footprint** - high capacity autoclave which does not require a lot of space



## GREEN

**Water Saving System** - use only 5 liters of water a day (optional - WS model)

**Sleep Mode** - allows user to set time to switch sterilizer to minimum energy consumption

**Low Rate Cycle** - you can run your sterilizer when electrical power costs are low, like after work hours, by setting a delayed start time



## PLUG & PLAY

**Independent Mode** - no need to connect the autoclave to the building utilities for distilled water, tap water and drain (optional - WS model)



## EASY TO MOVE - EASY TO INSTALL

**Mobility** - easy to move autoclave to new locations due to built-in swivel wheels

**Installation Made Easy** - connect to utilities with flexible piping

**Adjustable Floor Layout** - due to mobility and easy installation medical centers can easily adjust floor layout



## COST EFFECTIVE PRICING

**Efficient Chamber Design** - rounded chamber allows for economic pricing without compromising sterilization performance



## Mini CSSD for Operating Rooms



(A) Washer Disinfector, (B) 5075HSG, (C) 3870HSG, (D) Steri-Center Packing Table, (E) Sealing Machine

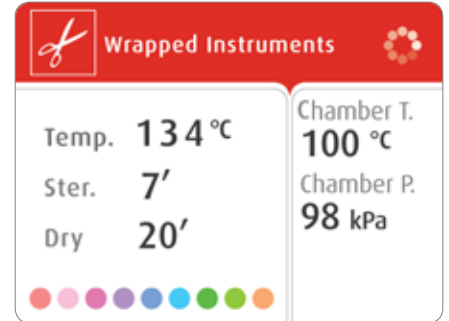
# Innovative Control System



## Dynamic Multi-Color Display

A bright multicolor LCD panel for easy reading, even from a distance.

- Wheel rotates to indicate an active cycle
- Time remaining during Water Filling, Sterilization, and Drying stages is updated in real-time
- Multilingual interface (26 languages)



## Digital Data on Your PC

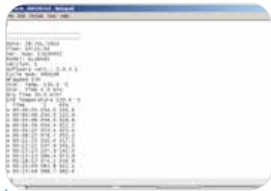
Save cycle data files on your PC with no additional software or specialized hardware



Connect USB memory



Select "Export History"



View Cycle Data Files on Your PC



Connect USB memory to your PC

### Build in Printer

Documents detailed history of each cycle

## R.PC.R Software

### Automatic Recording of Cycle Information to Your PC

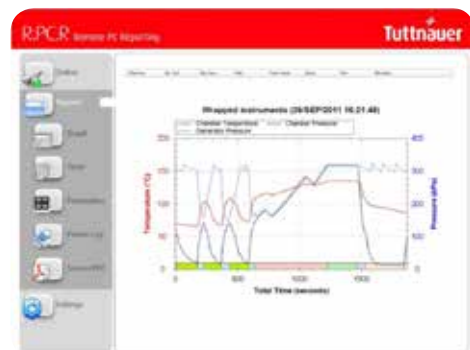
#### Reporting You Can Rely On

- Automatic cycle data recording to any PC on your network
- Convenient access to graphs & tables
- Easily generate PDF reports
- No need to file printouts, saving you time

#### Be in Control with Real-Time Remote Monitoring

- See the real-time autoclave display on your PC
- Monitor all activity for up to 8 autoclaves

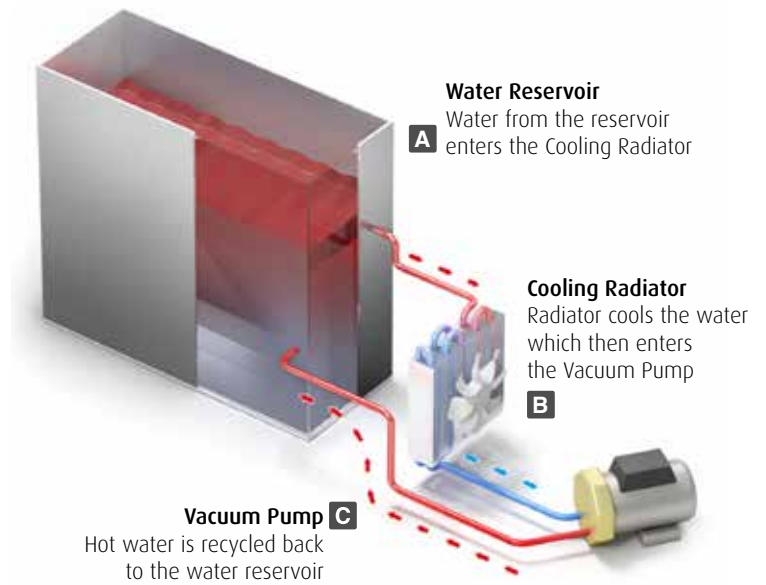
R.PC.R Software is optional.



**With R.PC.R you can see:** Graphs of the cycle data, numeric cycle data, cycle print-outs, measured values table, table of parameters.

### Water Saving System

Huge water savings are achieved with the optional highly efficient water recycling system (HSG-WS model) that consumes only 5 liters of tap water per day.



### Utility Connection Features

#### Dependent on Utilities

The HSG can be operated as a stationary sterilizer connected to building utilities for distilled water, tap water, drain and electricity.

#### Independent of Utilities

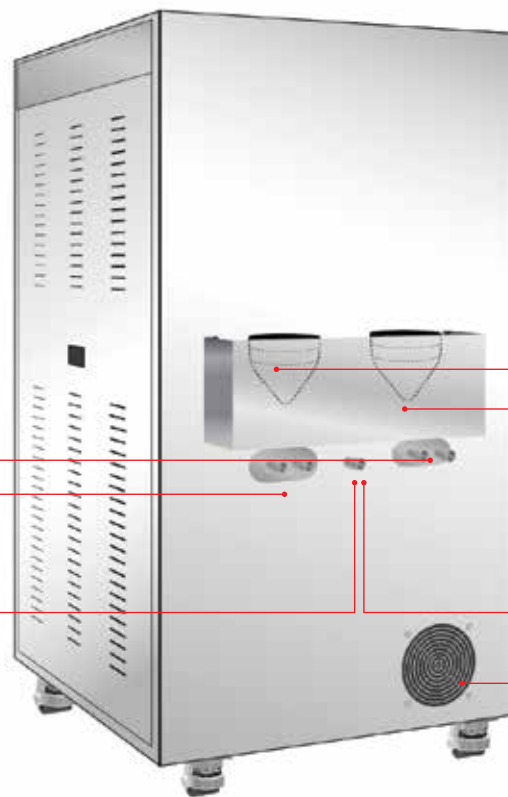
The HSG-WS comes with a standard “Plug and Play” option to operate only with an electric power connection. In this mode there is no need to connect the autoclave to the building utilities for distilled water, tap water and drain. With this option it is also possible to connect to utilities.

#### Dependent on Utilities

- ↑ Connection to tap water supply
- ↑ Connection to demineralized water supply
- ↑ Drain connection to building drain

#### Independent of Utilities

- ↑ Tap water reservoir funnel
- ↑ Demineralized water reservoir funnel
- ↑ Tap for manual draining
- ↑ Water saving system radiator



(Back of autoclave)

### Safety & Reliable

- Double locking safety device prevents door from opening while chamber is pressurized
- Control lock-out switch prevents starting a cycle if door is not properly locked
- Control system protection prevents door from opening at high pressure and temperature

## 3870HSG - 85 Liter Chamber

The 3870 HSG is a hospital grade Class B autoclave, suitable for large medical & dental clinics, and operating rooms. Designed to be a fast cycle sterilizer that is mobile, operates 24 hours a day, and can optionally operate independent of building utilities.

- Automatic locking door
- Powerful built-in steam generator
- 316L Chamber & trays



\* The specification above also applies to the water saving option (HSG-WS)

### Technical Specifications

Model	Chamber Dim. $\phi$ x L (mm)	Chamber Vol. (Liters)	No. of Trays	Tray Dimensions W x H x D (mm)	Overall Dimensions W x H x D (mm)	Autoclave Weight (kg)
<b>3870 HSG</b>	384 x 758	85L	2	Small: 286 x 25 x 675 Large: 350 x 25 x 675	720 x 1365 x 1180	180 kg
<b>5075 HSG</b>	500 x 750	160L	2	Small: 310 x 21 x 698 Large: 471 x 21 x 698	857 x 1660 x 1286	366 kg



## 5075HSG - 160 Liter Chamber

The 5075HSG is a fully featured stand-alone mobile pre & post vacuum autoclave. Many years of expertise with industrial sterilization technology have been packaged into the 5075HSG autoclave making it an ideal hospital grade autoclave. The 5075HSG is commonly used for fast cycles in small hospitals, medical centers and other mid-size healthcare facilities which need substantial loading capacity.

- Manual locking door
- Powerful built-in steam generator
- 316L Chamber & trays

5075HSG Dimensions



### Sterilization Cycle Programs

HSG autoclaves include 5 fixed sterilization programs, 2 test programs and 22 customizable sterilization programs.

Program	Load Type	Temp. (°C)	Sterilization Time (min)	Dry Time (min)	Total Time without drying (min) *	
					3870HSG	5075 HSG
Unwrapped 134	Unwrapped instruments	134	4	1	31	24
Wrapped 134	Wrapped instruments	134	7	20	34	37
Unwrapped 121	Unwrapped delicate instruments	121	20	0	33	36
Wrapped 121	Wrapped delicate instruments	121	20	20	46	50
Prion 134	Prion	134	18	20	45	50
Leak Test	No load	-	-	-	24	31
Bowie & Dick Test	PCD	134	3.5	2	12	21

Cycle times are based on: 5kg load for 3870HSG, 8kg load for 5075HSG, and do not include drying. Cycle times based on warm chamber and may change according to load size. **Bowie & Dick Test** is also suitable for Helix test device. **Leak Test** checks that the chamber under vacuum does not leak.

## Complies with the Strictest International Directives and Standards

### Quality Standards

- ISO 9001:2008 - Quality Management Systems
- EN ISO 13485:2012 Quality Management System - Medical Devices
- In compliance with 21 CFR part 820 & part 11

### Directives

- MDD 93/42/EEC amended in Directive 2007/47/EEC
- PED 97/23/EC - Pressure Equipment Directive
- 2002/96/EC WEEE and 2002/95/EC RoHS

### Technical Standards

- EN 285: 2006+A2: 2009 Large steam sterilizer
- EN 13060: 2004+A2: 2010 - Small steam sterilizer
- EN 61010-1: 2010 Safety Requirements for measurement control and laboratory use
- EN 61326-1: 2006 Electrical Equipment for EMC requirements
- EN 61010-2-40: 2005 Safety requirements for sterilizers used to treat medical materials
- EN 17665-1: 2006 Sterilization of health care products - moist heat
- ANSI \ AAMI - ST 8: 2008 Hospital steam sterilizers
- ANSI \ AAMI - ST55: 2010 Table Top steam sterilizer
- ASME Code section I and section VIII. Div.I

### Electrical Specifications

Model	Voltage (Volts) / Frequency (Hz)	Power (kW)
3870HSG - D 3870HSG - WS 5075HSG - WS	3 ph, 208/230/400/440/480 Volts 1 ph, 230 Volts (requires switch box - optional) 50/60 Hz	9 kW
5075HSG - D	3 ph, 208/230/400/440/480 Volts 1 ph, 230 Volts (requires switch box - optional) 50/60 Hz	18 kW

## Your Sterilization & Infection Control Partners

For over 89 years, Tuttnauer's sterilization and infection control products have been trusted by hospitals, universities, research institutes, clinics and laboratories throughout the world. Supplying a range of top-quality products to over 140 countries, Tuttnauer has earned global recognition as a leader in sterilization and infection control.



Learn from our Experts  
Join our blog [www.tuttnauer.com/blog](http://www.tuttnauer.com/blog)



Economic Line

International Sales and Marketing  
E-mail: [info@tuttnauer-hq.com](mailto:info@tuttnauer-hq.com)  
[www.tuttnauer.com](http://www.tuttnauer.com)

Tuttnauer Europe b.v.  
Hoeksteen 11, 4815 PR  
P.O.B. 7191, 4800 GD Breda  
The Netherlands  
Tel: +31 (0) 765 423 510, Fax: +31 (0) 765 423 540  
E-mail: [info@tuttnauer.nl](mailto:info@tuttnauer.nl)

Tuttnauer USA Co.  
25 Power Drive,  
Hauppauge, NY 11788  
Tel: +800 624 5836, +631 737 4850 Fax: +631 737 0720  
E-mail: [info@tuttnauer.com](mailto:info@tuttnauer.com)

Your Sterilization & Infection Control Partners

Distributed by: